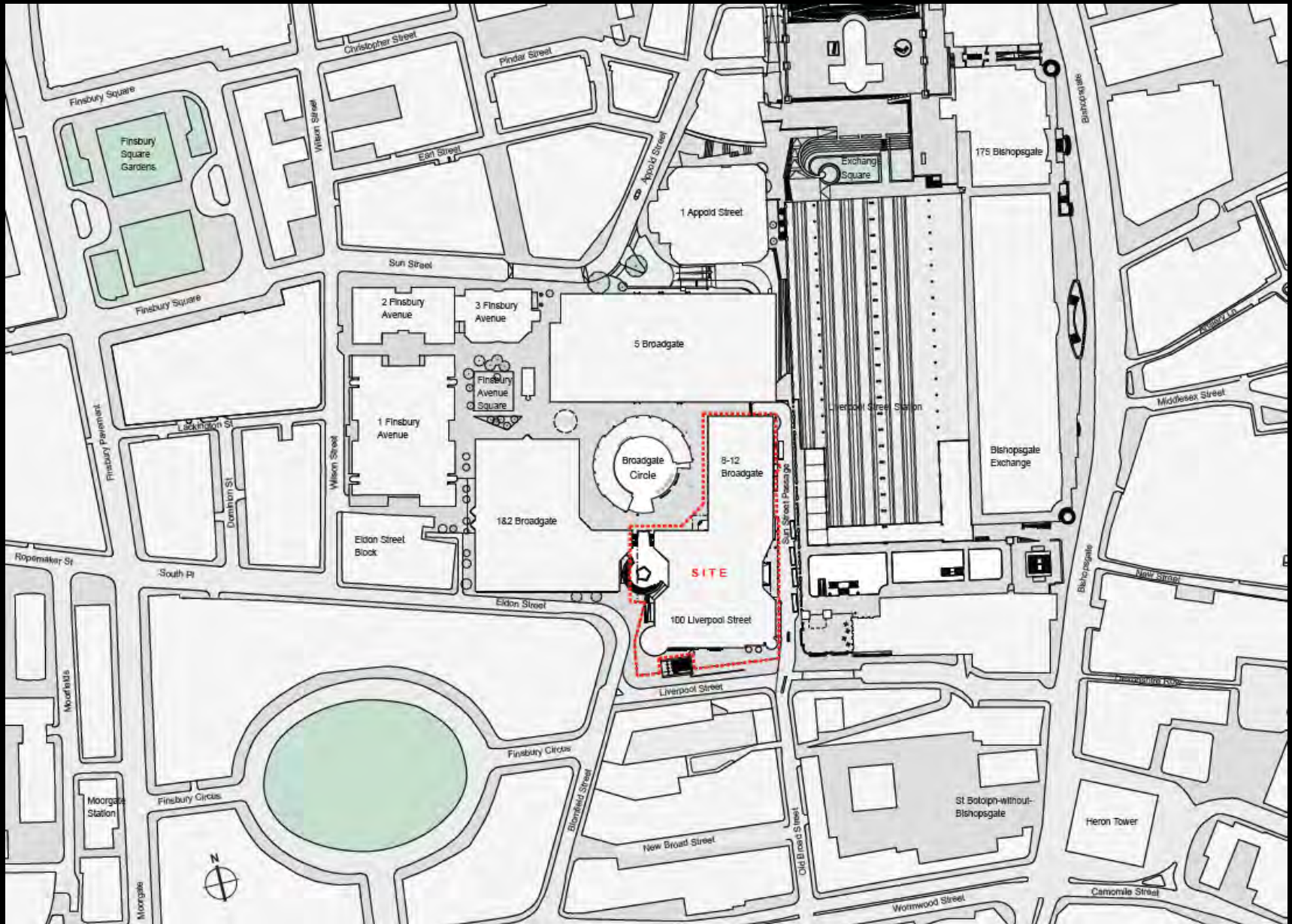


Planning & Transportation Committee

12th May 2015

100 Liverpool Street and 8-12 Broadgate



Site location plan

100 Liverpool Street and 8-12 Broadgate



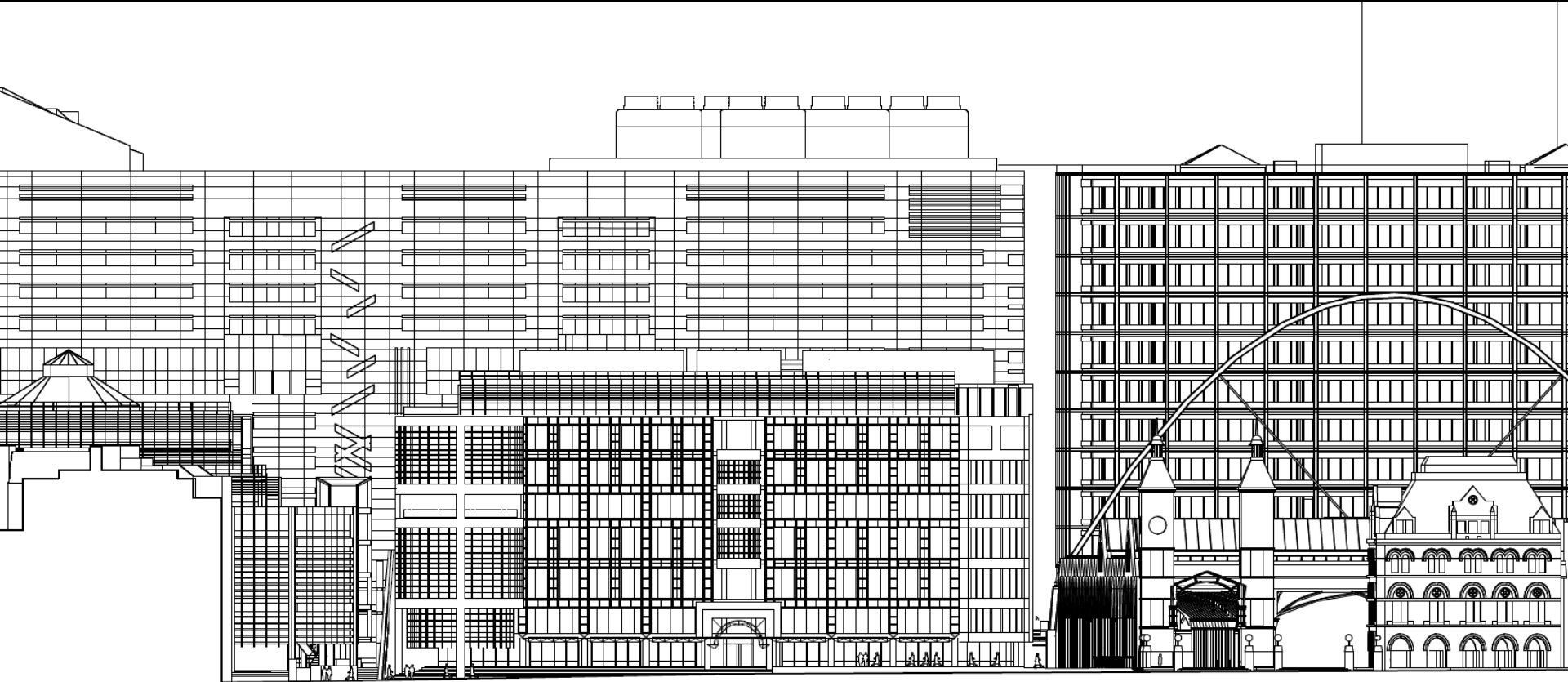
View west along Liverpool Street

100 Liverpool Street and 8-12 Broadgate



View south-east from Broadgate Circle

100 Liverpool Street and 8-12 Broadgate

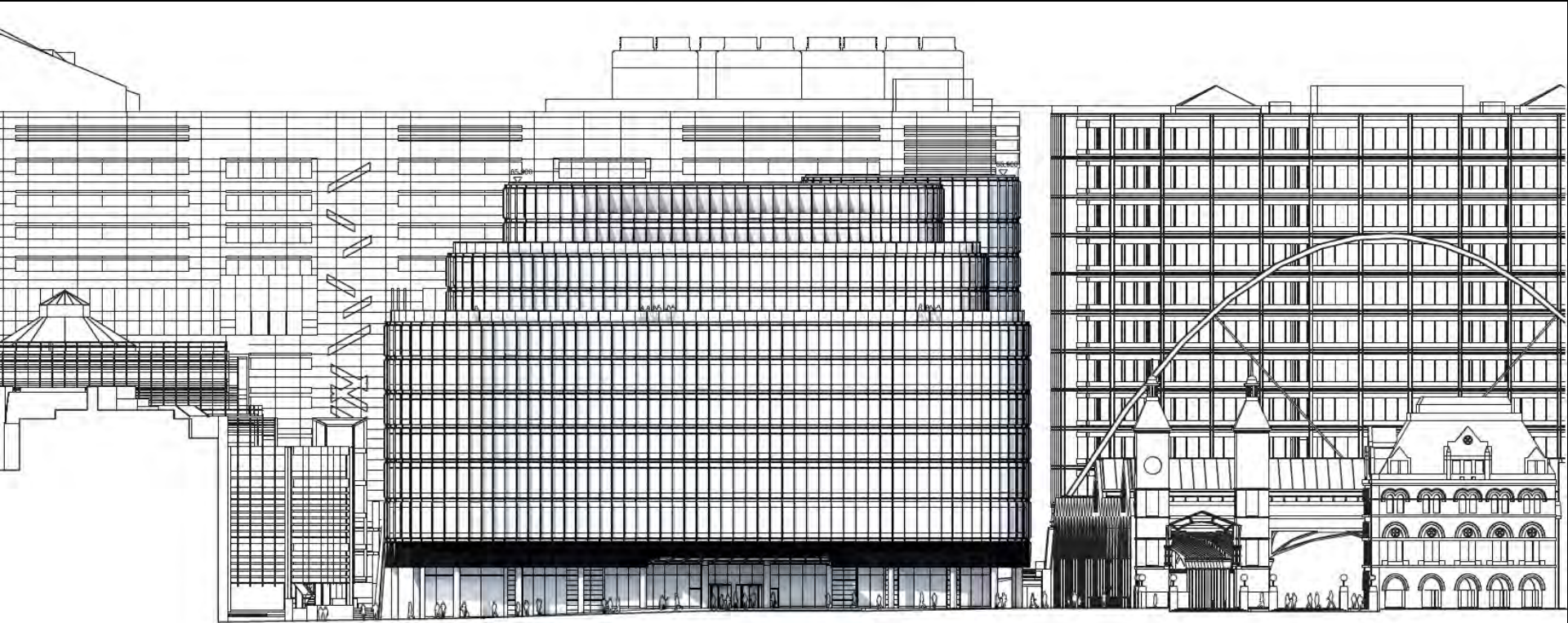


BLONFIELD STREET

LIVERPOOL STREET STATION

Existing south elevation

100 Liverpool Street and 8-12 Broadgate

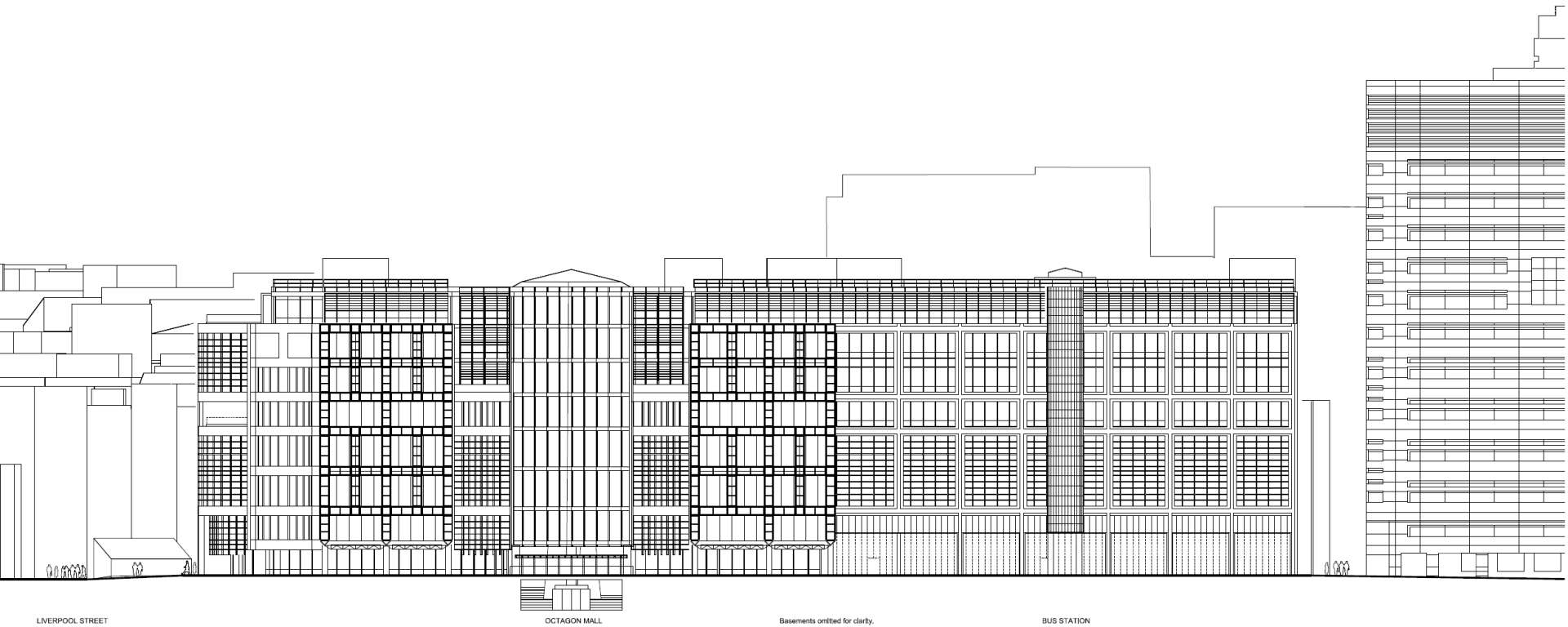


BLOMPFIELD STREET

LIVERPOOL STREET STATION

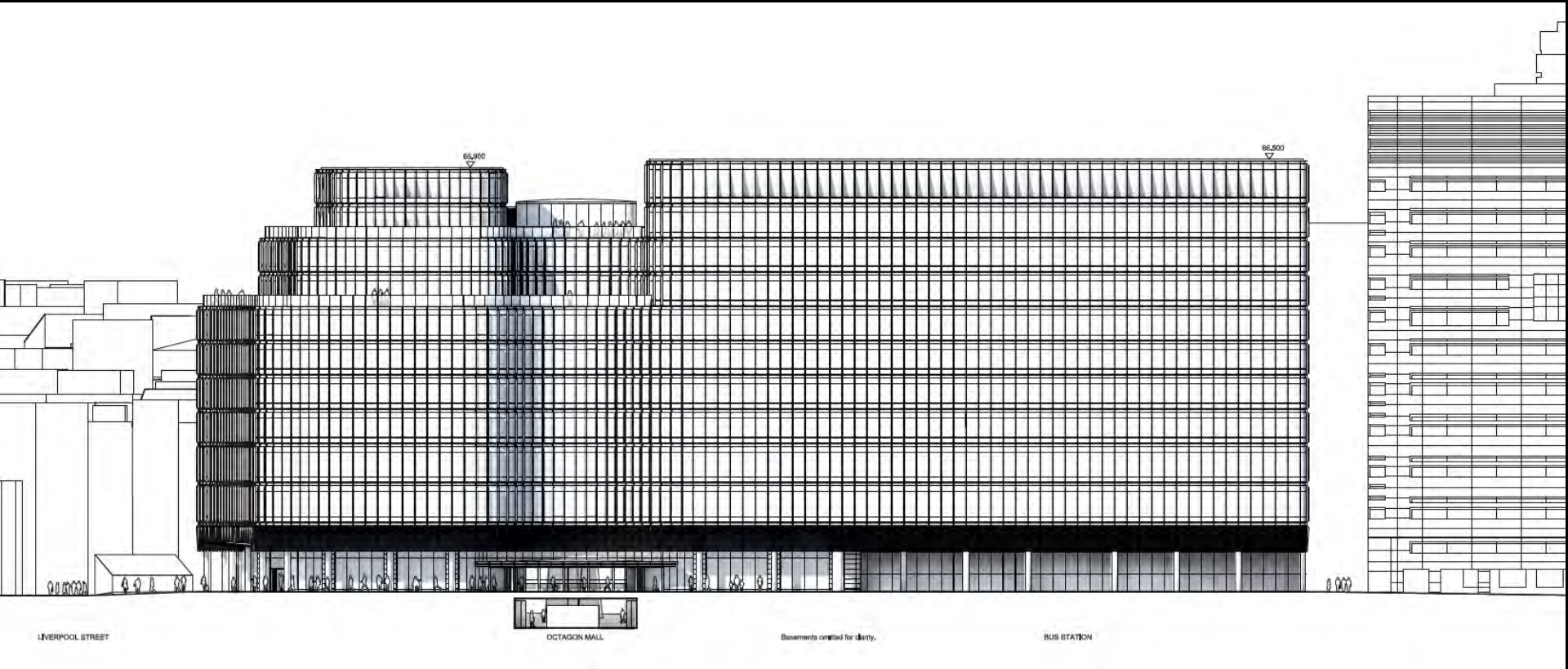
Proposed south elevation

100 Liverpool Street and 8-12 Broadgate



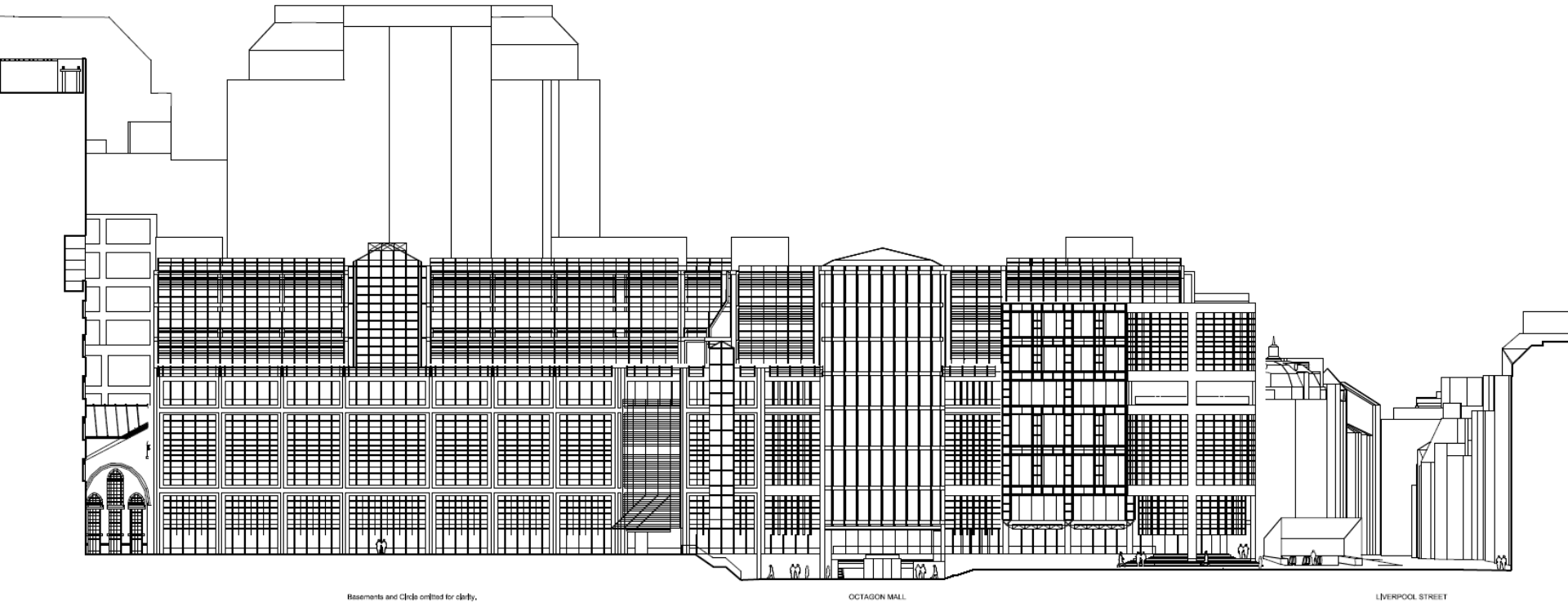
Existing east elevation

100 Liverpool Street and 8-12 Broadgate



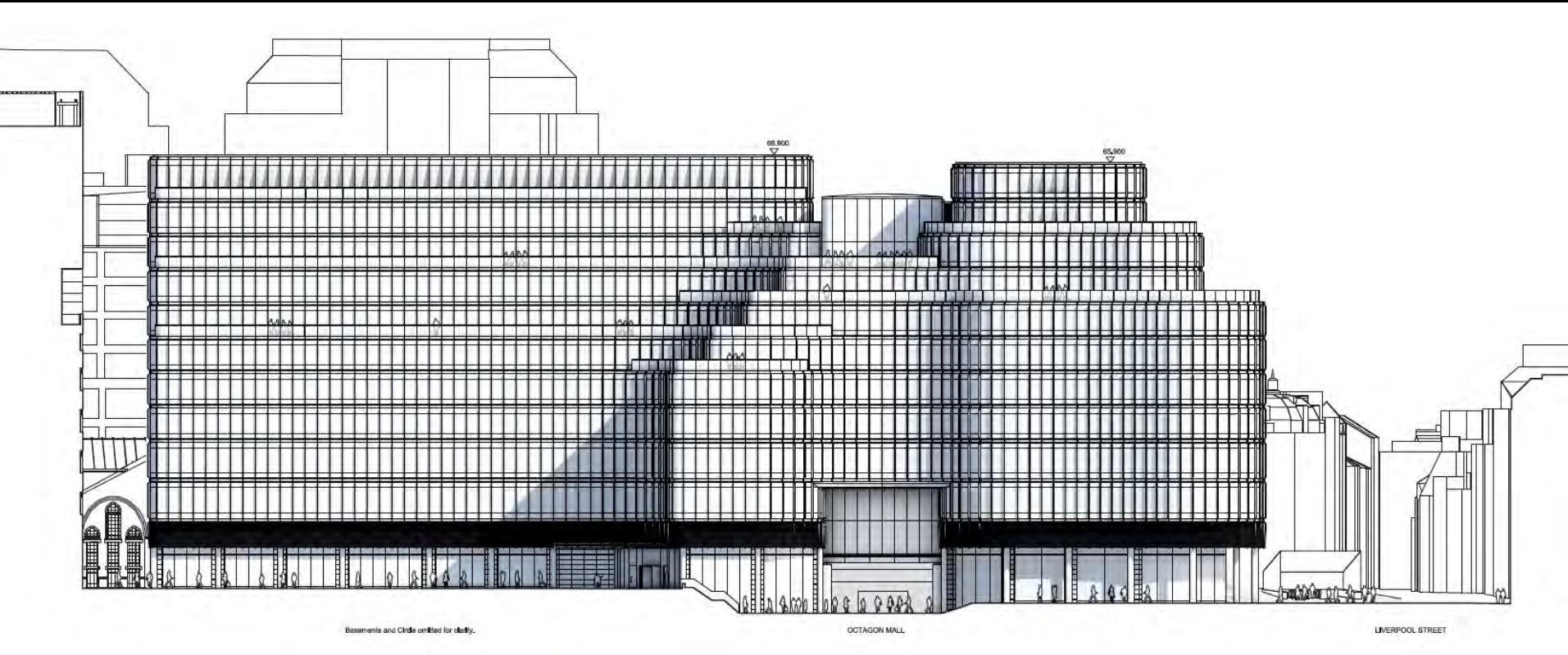
Proposed east elevation

100 Liverpool Street and 8-12 Broadgate



Existing west elevation

100 Liverpool Street and 8-12 Broadgate



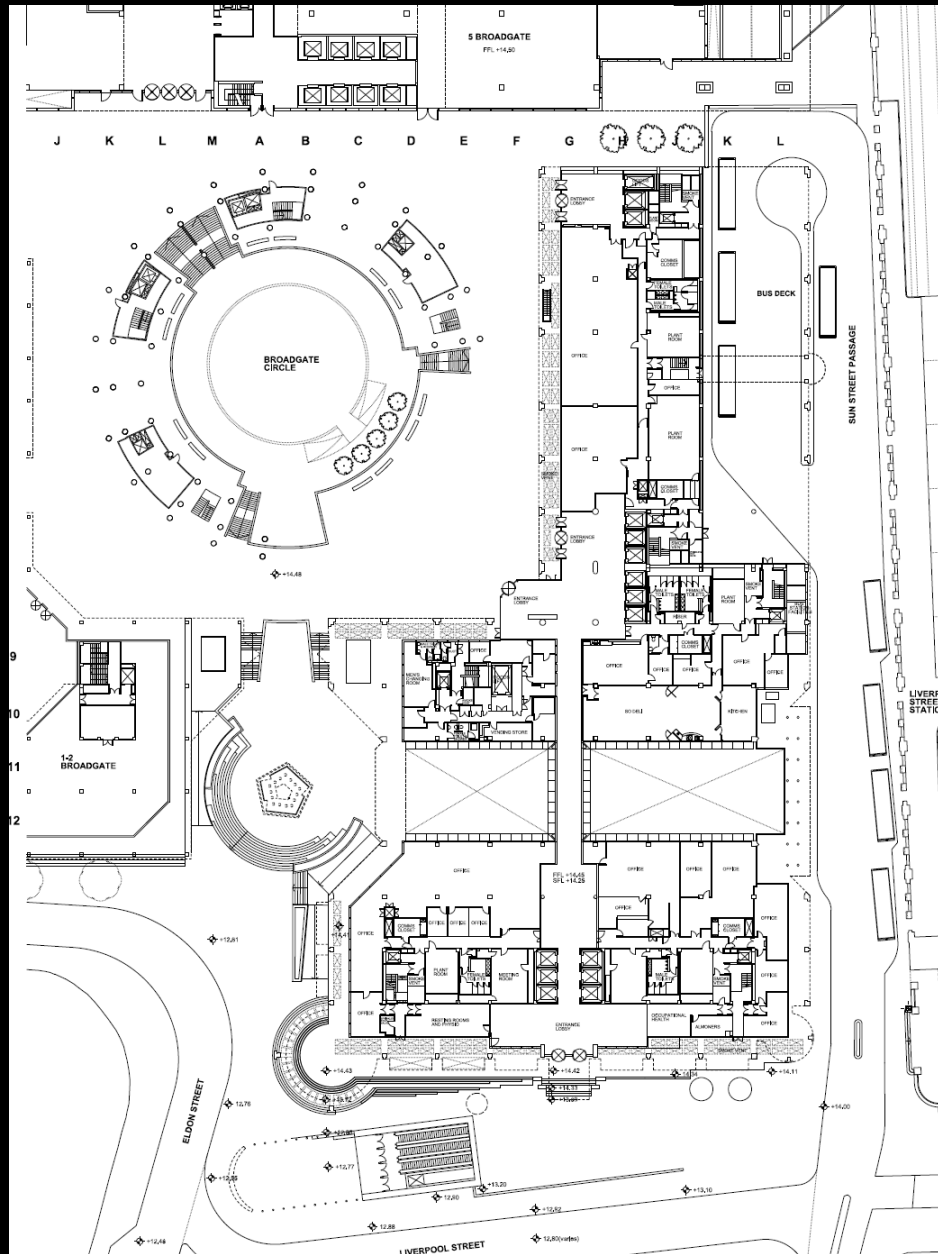
Proposed west elevation

100 Liverpool Street and 8-12 Broadgate



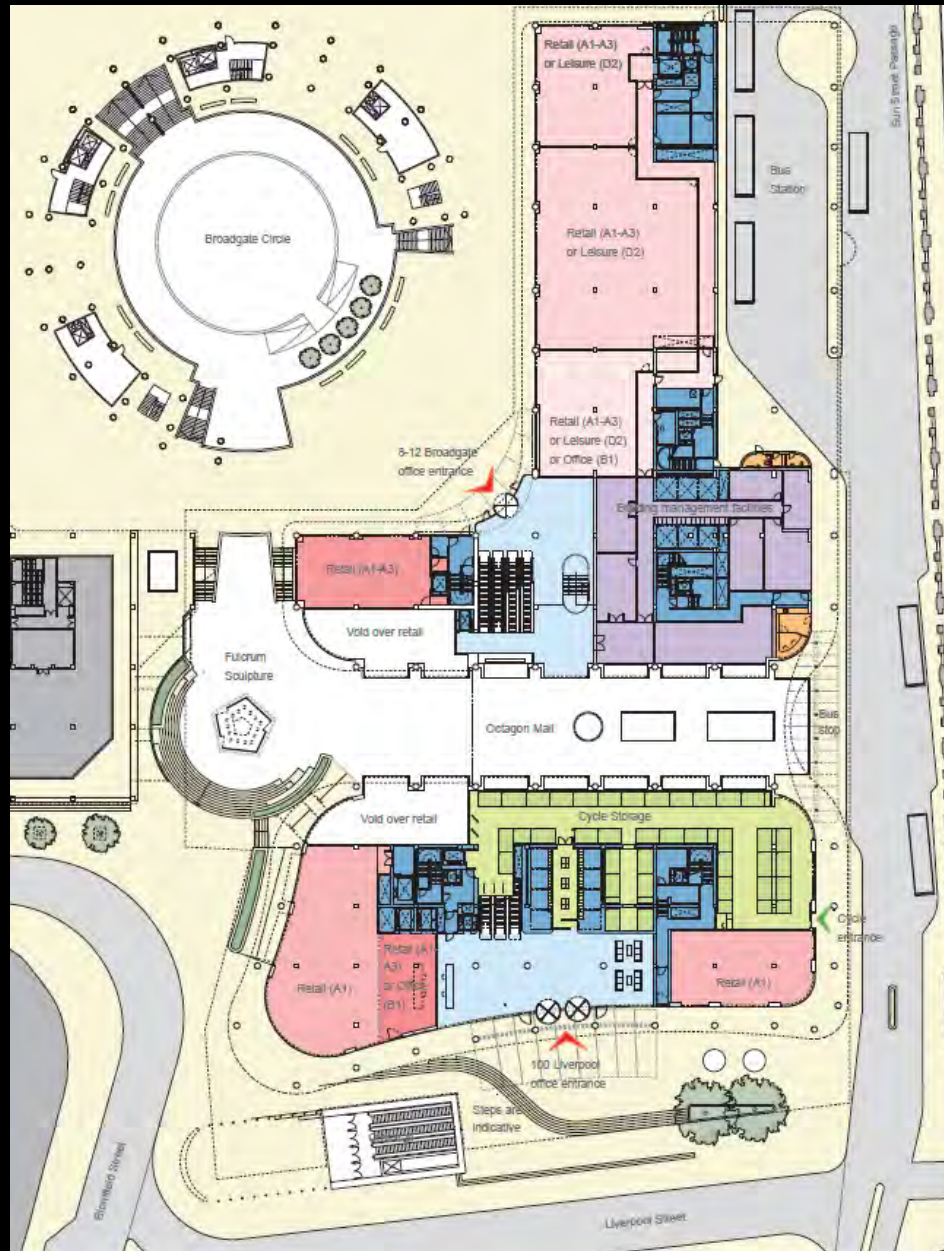
Proposed north elevation

100 Liverpool Street and 8-12 Broadgate



Existing ground floor plan

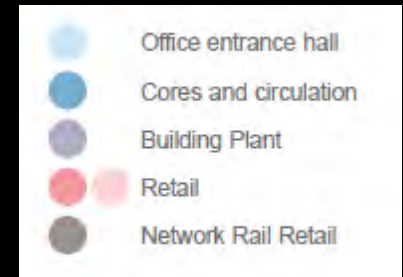
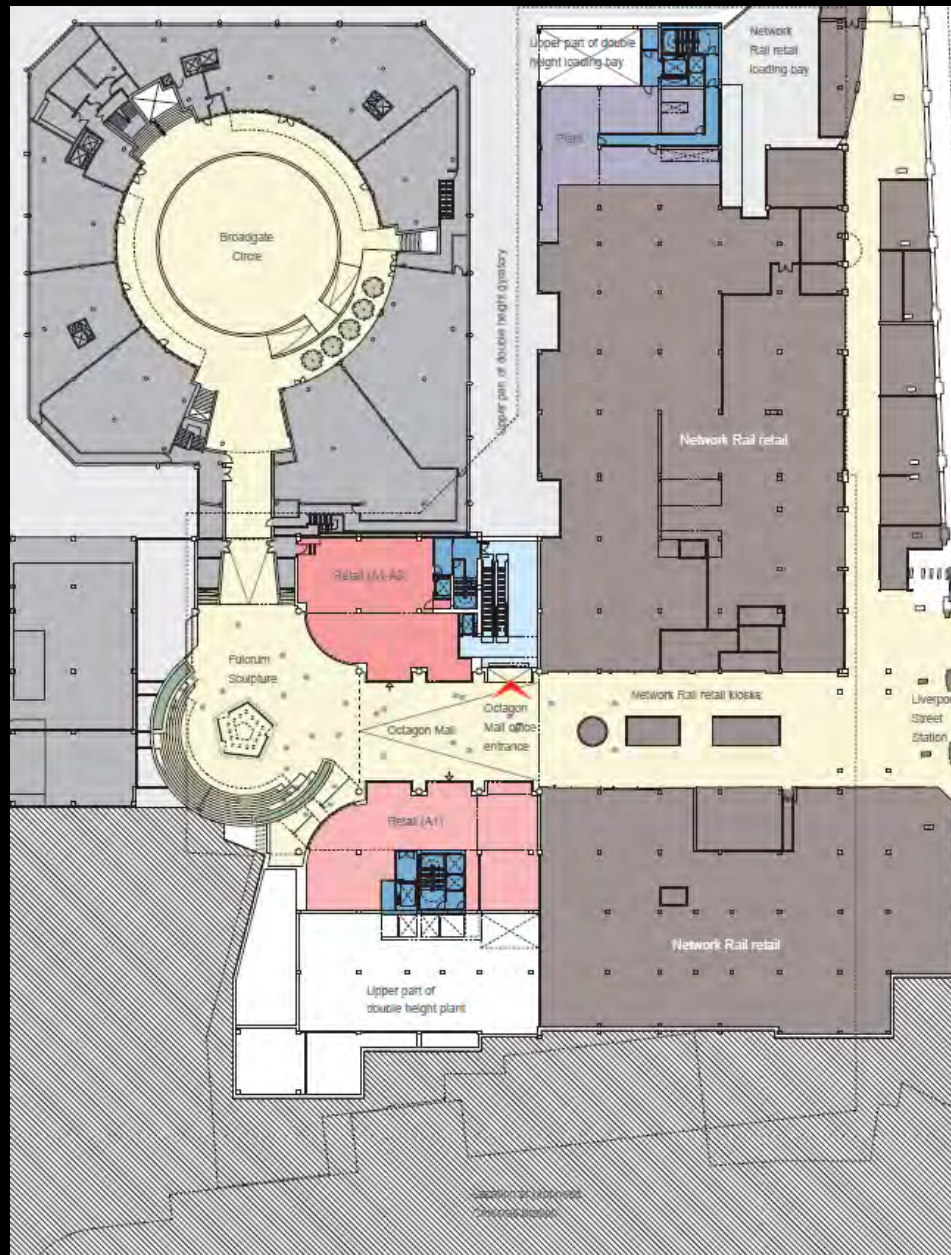
100 Liverpool Street and 8-12 Broadgate



- Office entrance hall / reception
- Cores and circulation
- Retail (various uses as identified in plan)
- Cycle storage
- Building management facilities
- Bus station facilities

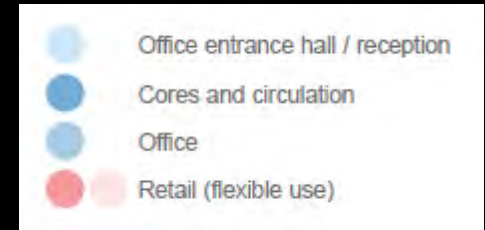
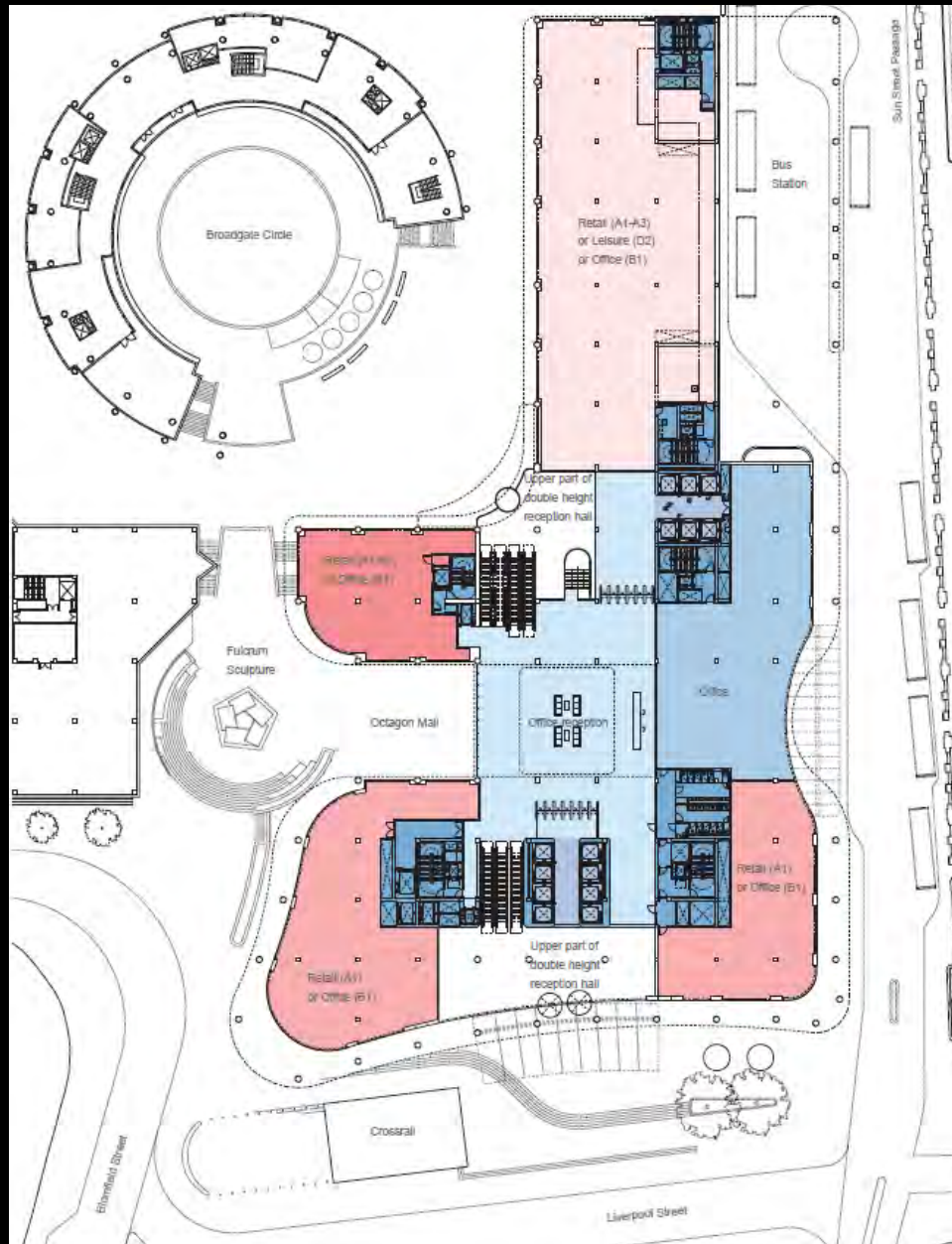
Proposed development at ground level

100 Liverpool Street and 8-12 Broadgate



Proposed development at lower ground level

100 Liverpool Street and 8-12 Broadgate



Proposed development at level 1

100 Liverpool Street and 8-12 Broadgate



Proposed level 2 plan

100 Liverpool Street and 8-12 Broadgate



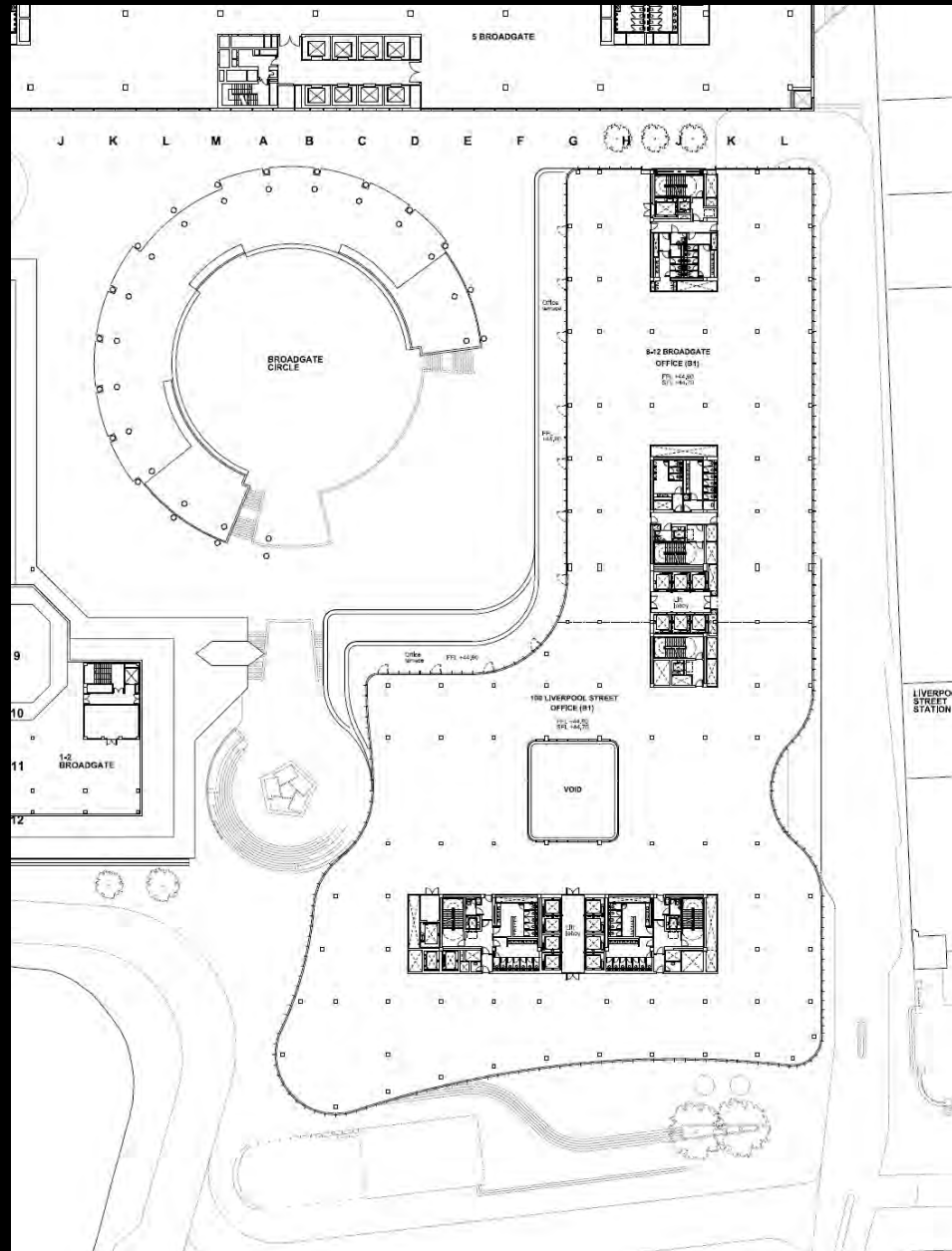
Proposed level 3 plan

100 Liverpool Street and 8-12 Broadgate



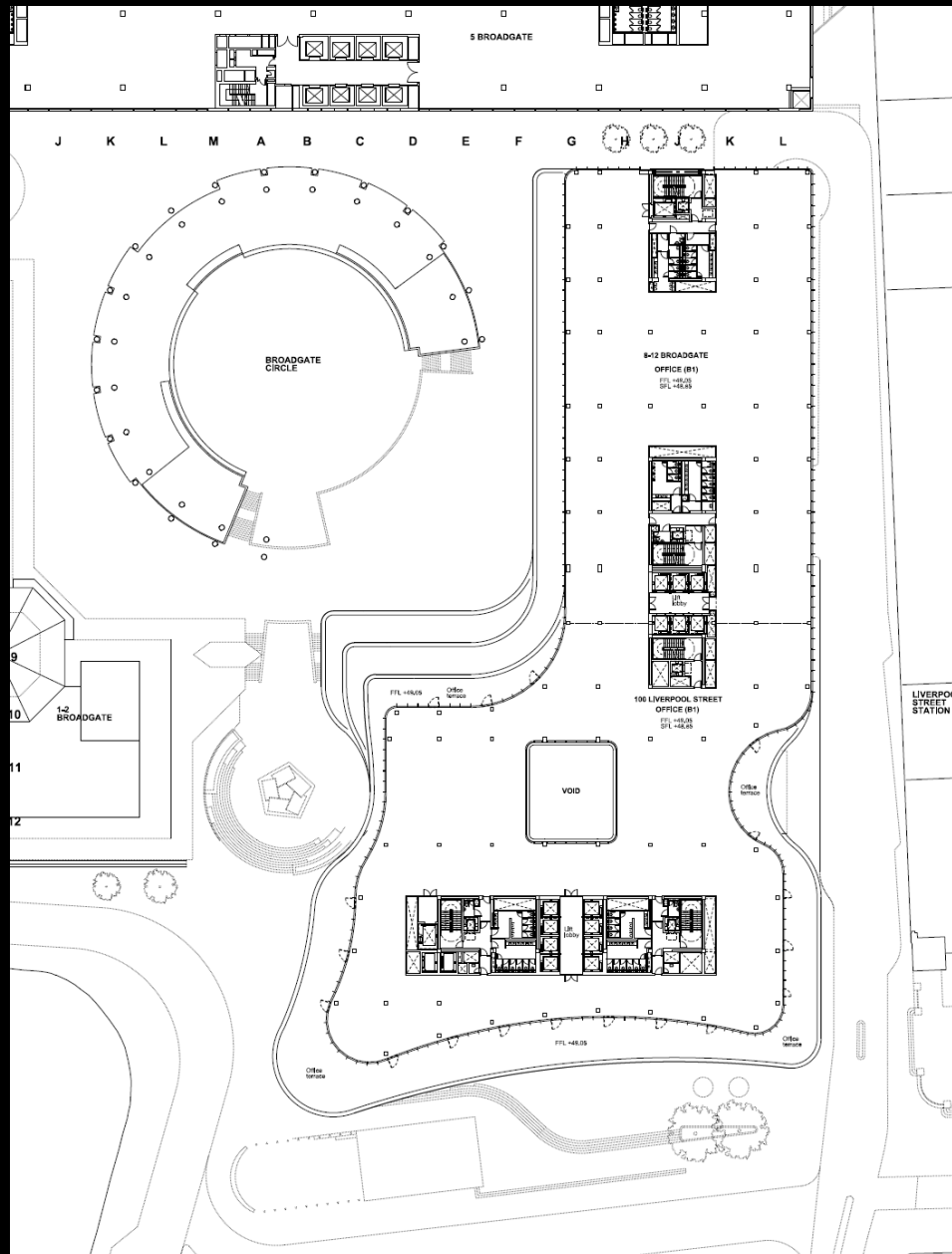
Proposed level 6 plan

100 Liverpool Street and 8-12 Broadgate



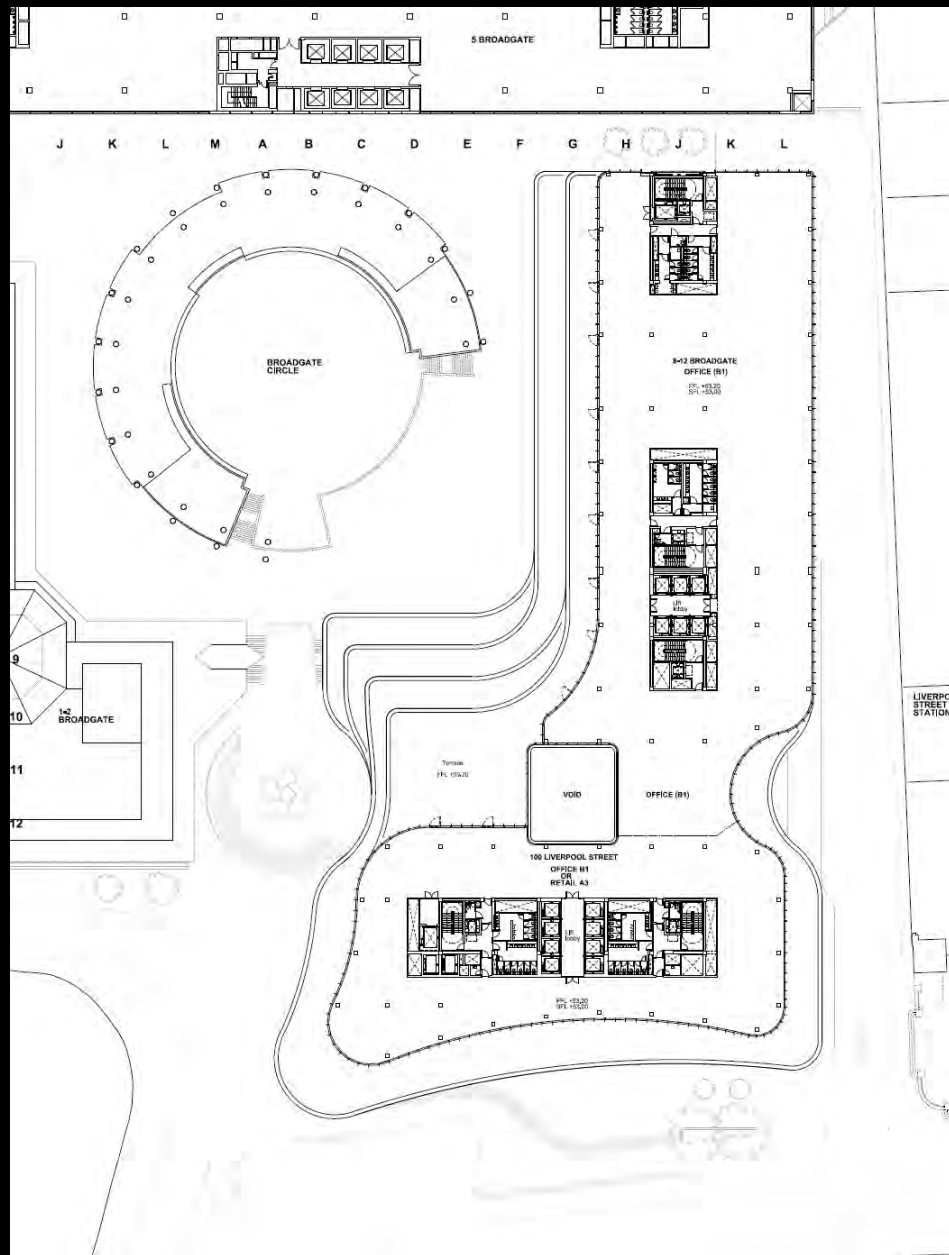
Proposed level 7 plan

100 Liverpool Street and 8-12 Broadgate



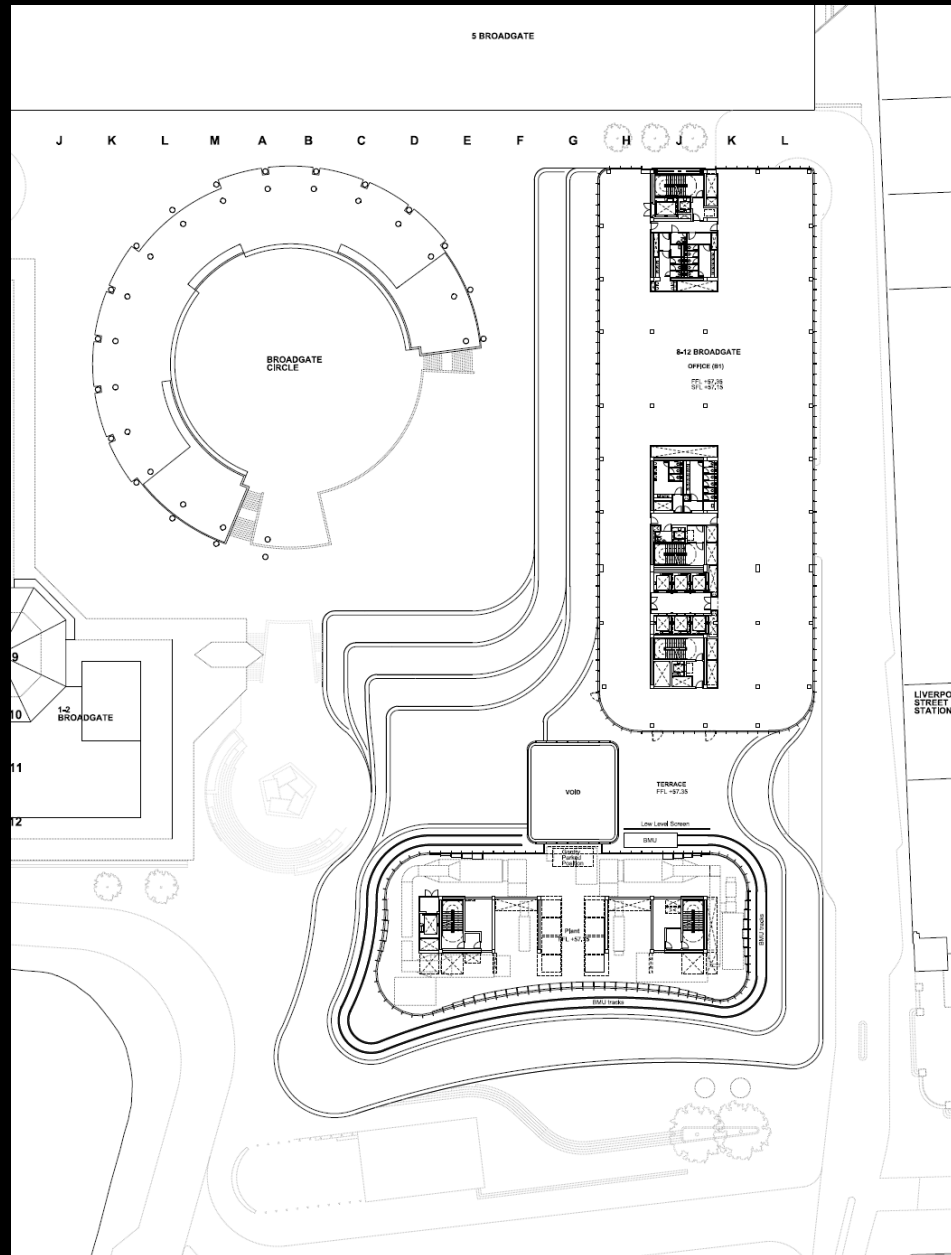
Proposed level 8 plan

100 Liverpool Street and 8-12 Broadgate



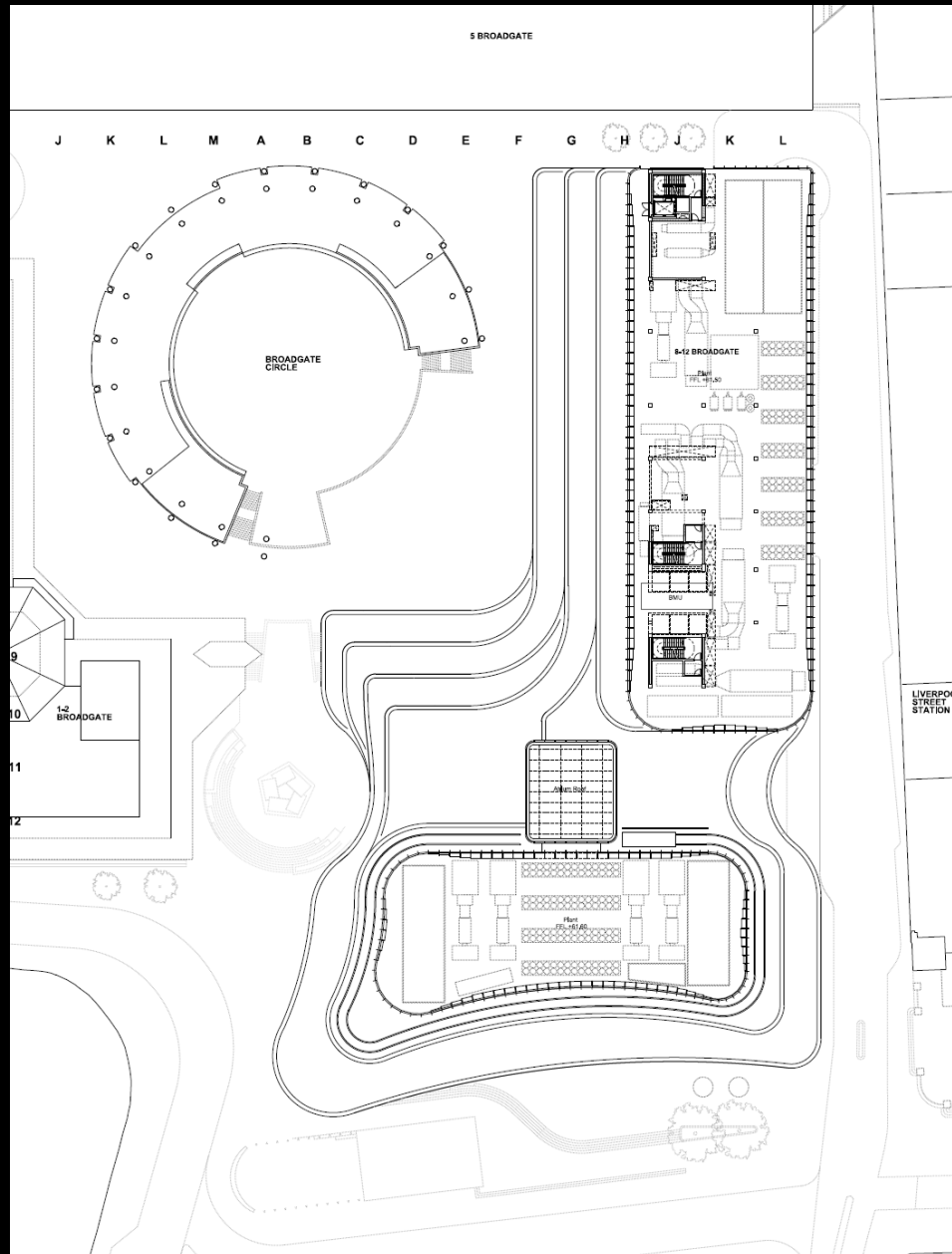
Proposed level 9 plan

100 Liverpool Street and 8-12 Broadgate



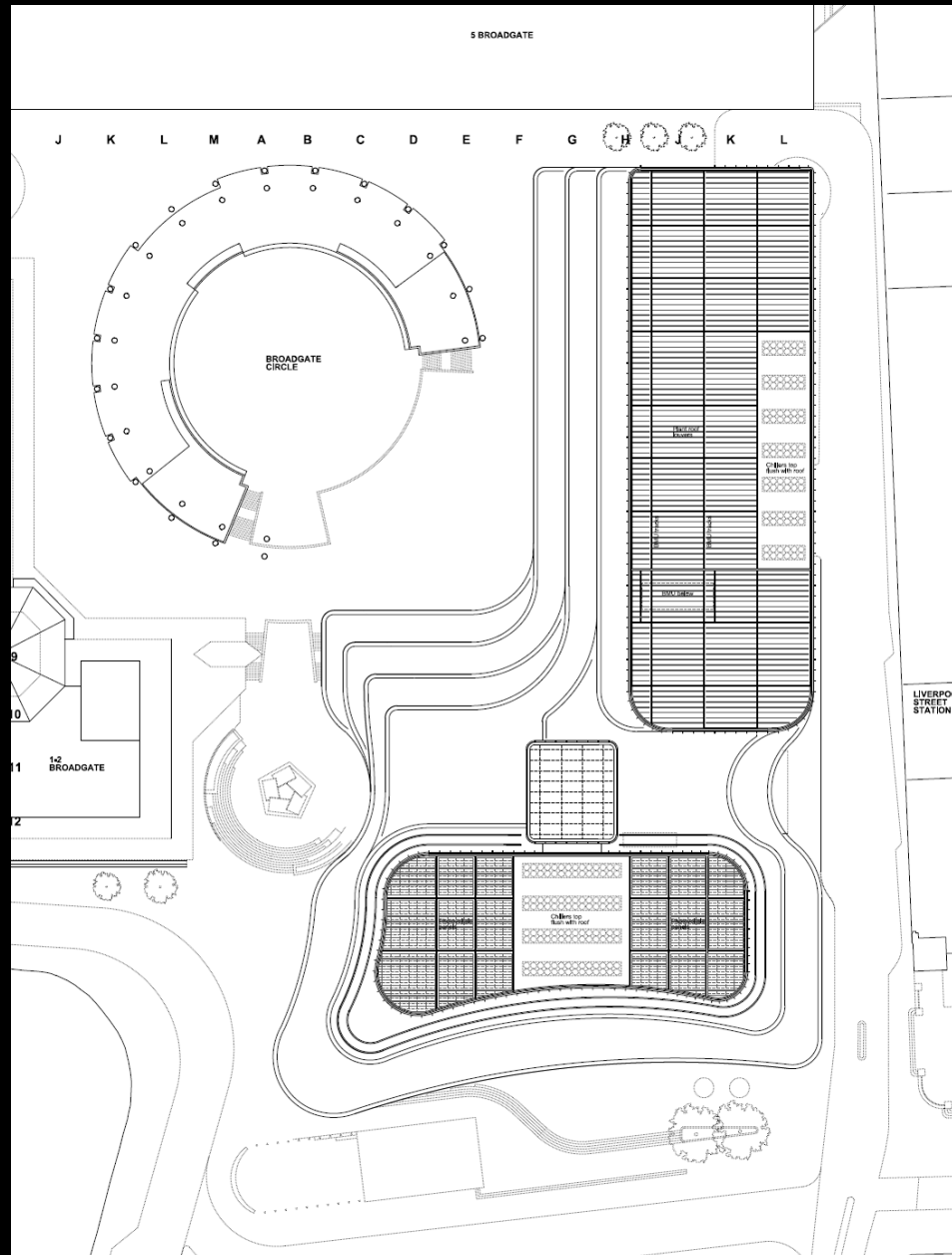
Proposed level 10 plan

100 Liverpool Street and 8-12 Broadgate



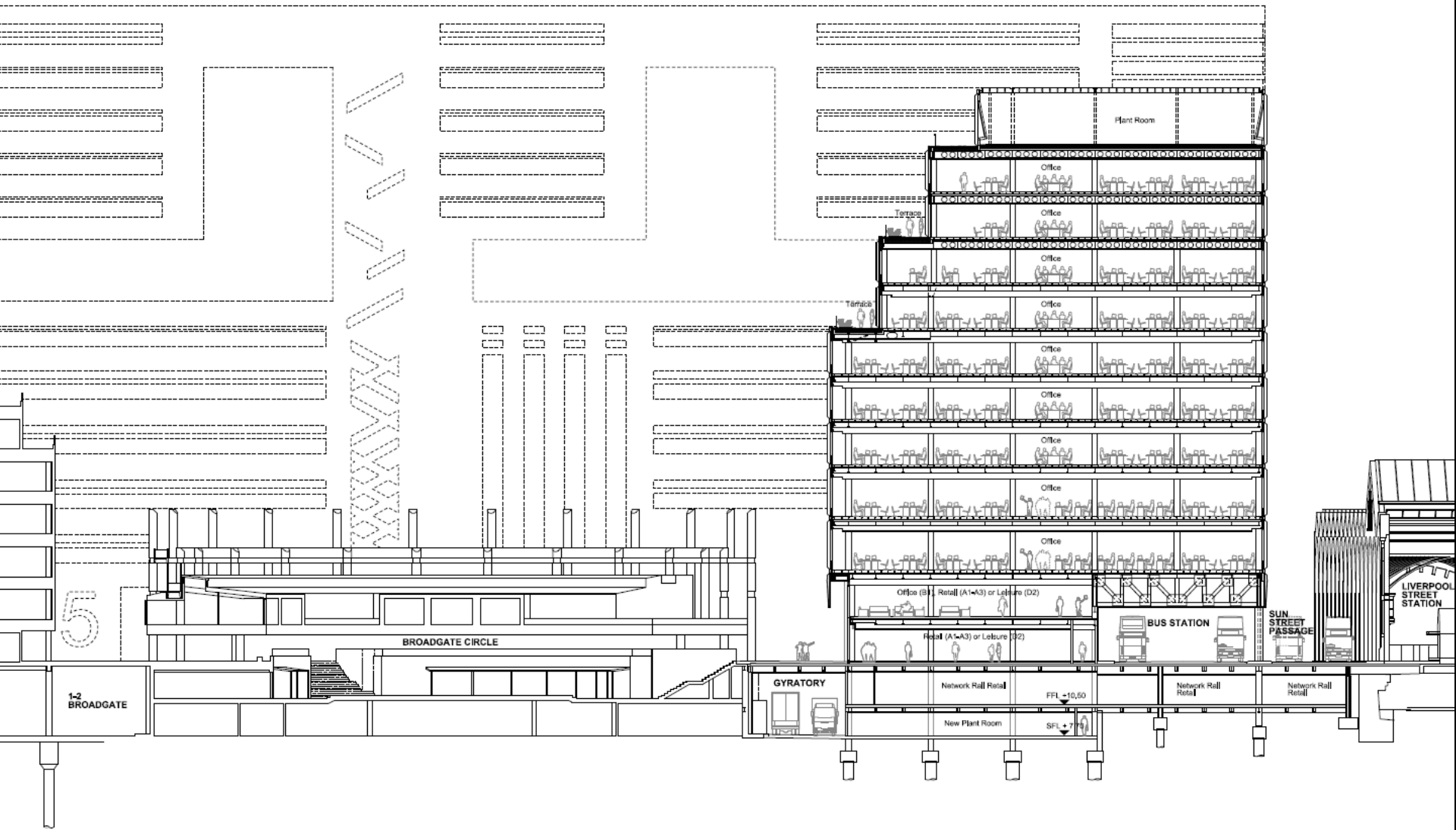
Proposed plant level plan

100 Liverpool Street and 8-12 Broadgate



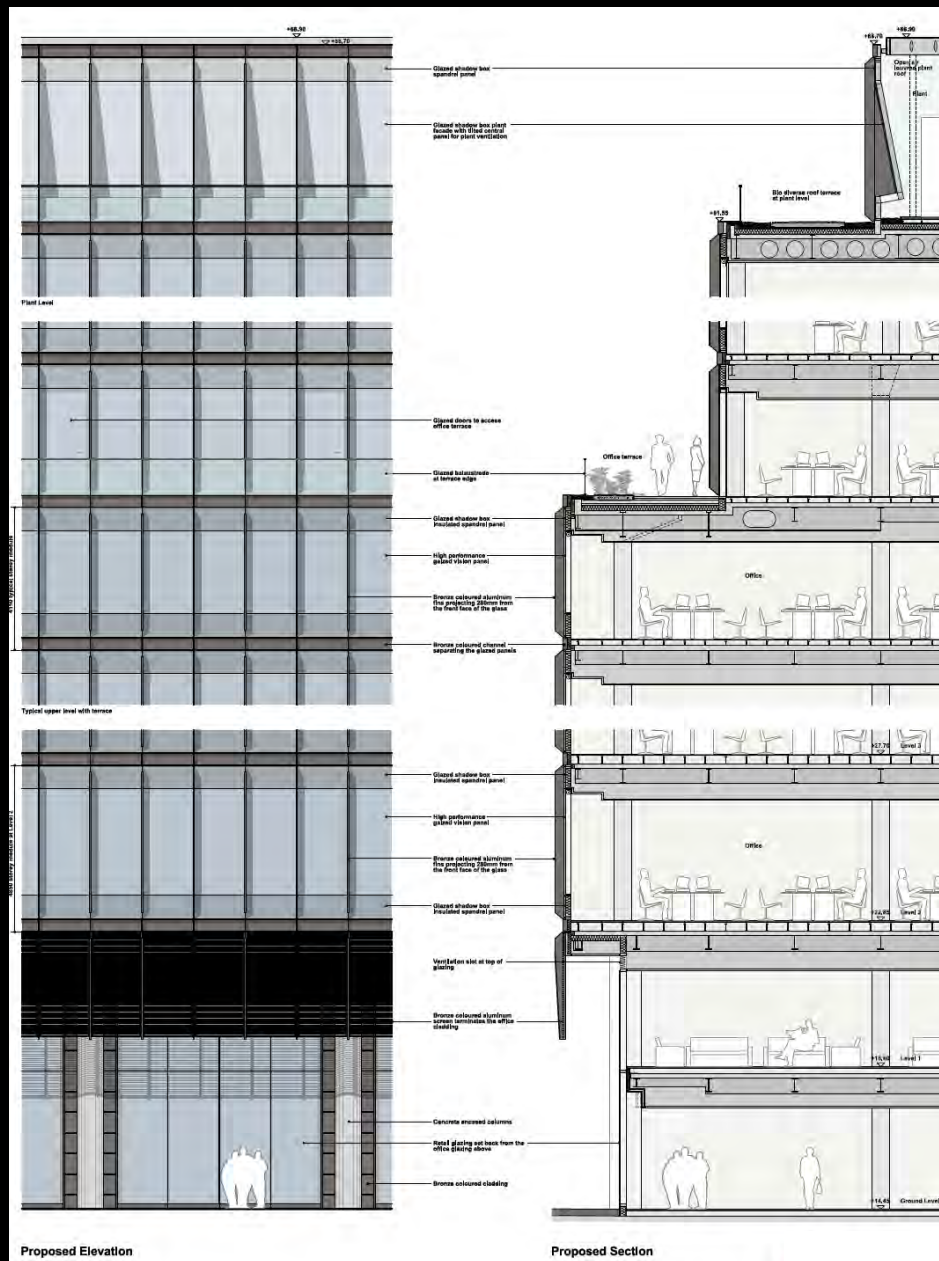
Proposed roof level plan

100 Liverpool Street and 8-12 Broadgate



Proposed section through 8-12 Broadgate looking north

100 Liverpool Street and 8-12 Broadgate



Proposed Elevation

Proposed Section

Proposed façade detail – 8-12 Broadgate (west)

100 Liverpool Street and 8-12 Broadgate



Existing view from Liverpool Street looking north-west

100 Liverpool Street and 8-12 Broadgate



Proposed view from Liverpool Street looking north-west

100 Liverpool Street and 8-12 Broadgate



Existing view from Liverpool Street looking west

100 Liverpool Street and 8-12 Broadgate



Proposed view from Liverpool Street looking west

100 Liverpool Street and 8-12 Broadgate



Existing view from Liverpool Street looking north-west

100 Liverpool Street and 8-12 Broadgate



Proposed view from Liverpool Street looking north-west

100 Liverpool Street and 8-12 Broadgate



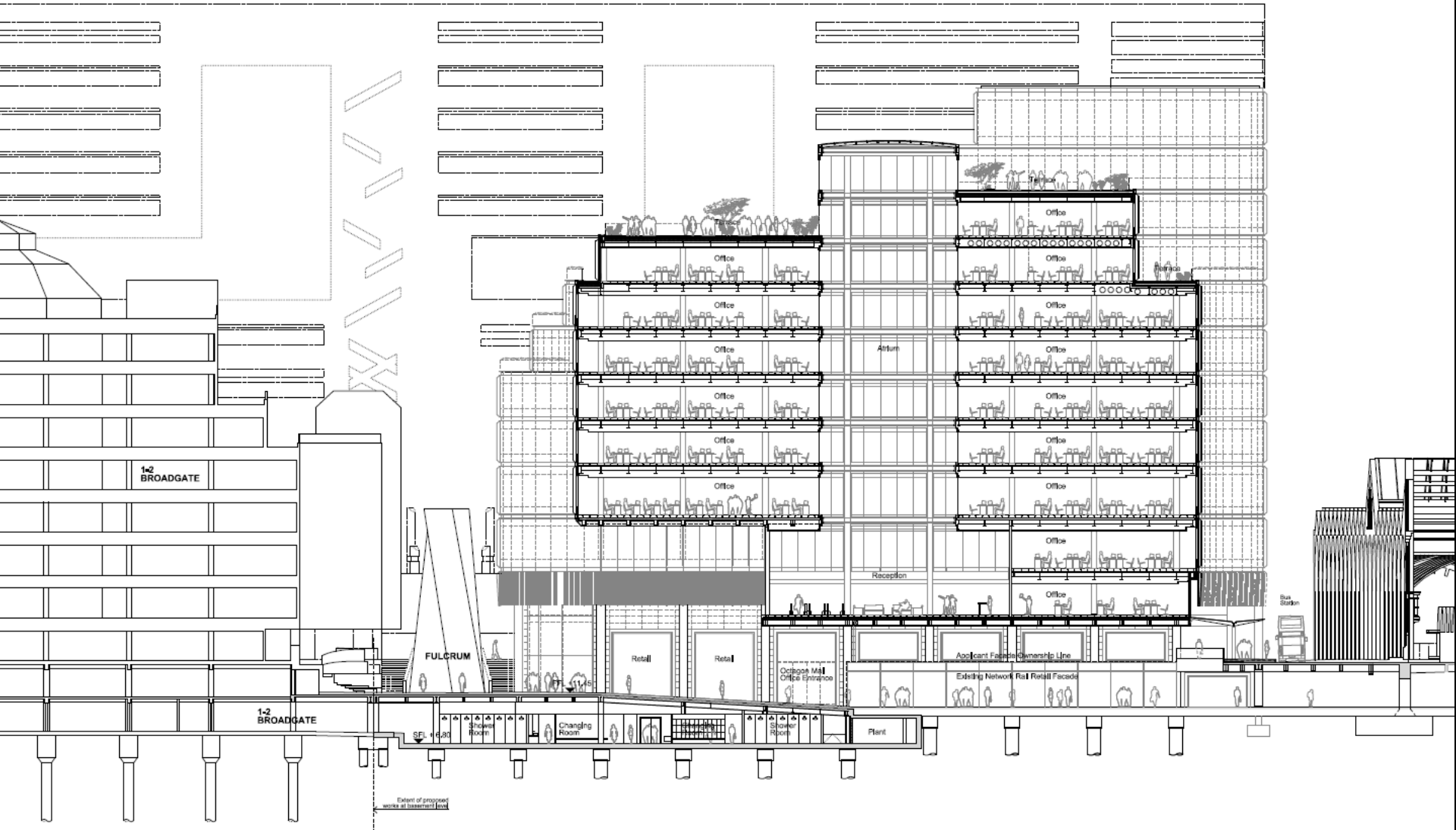
Existing view from junction of Finsbury Circus and Blomfield Street looking north-east

100 Liverpool Street and 8-12 Broadgate



Proposed view from junction of Finsbury Circus and Blomfield Street looking north-east

100 Liverpool Street and 8-12 Broadgate



Proposed section through Octagon Mall looking north

100 Liverpool Street and 8-12 Broadgate



Existing view from within Broadgate Estate looking north-east

100 Liverpool Street and 8-12 Broadgate



Proposed view from within Broadgate Estate looking north-east

100 Liverpool Street and 8-12 Broadgate



Existing view across Broadgate Circle looking south

100 Liverpool Street and 8-12 Broadgate



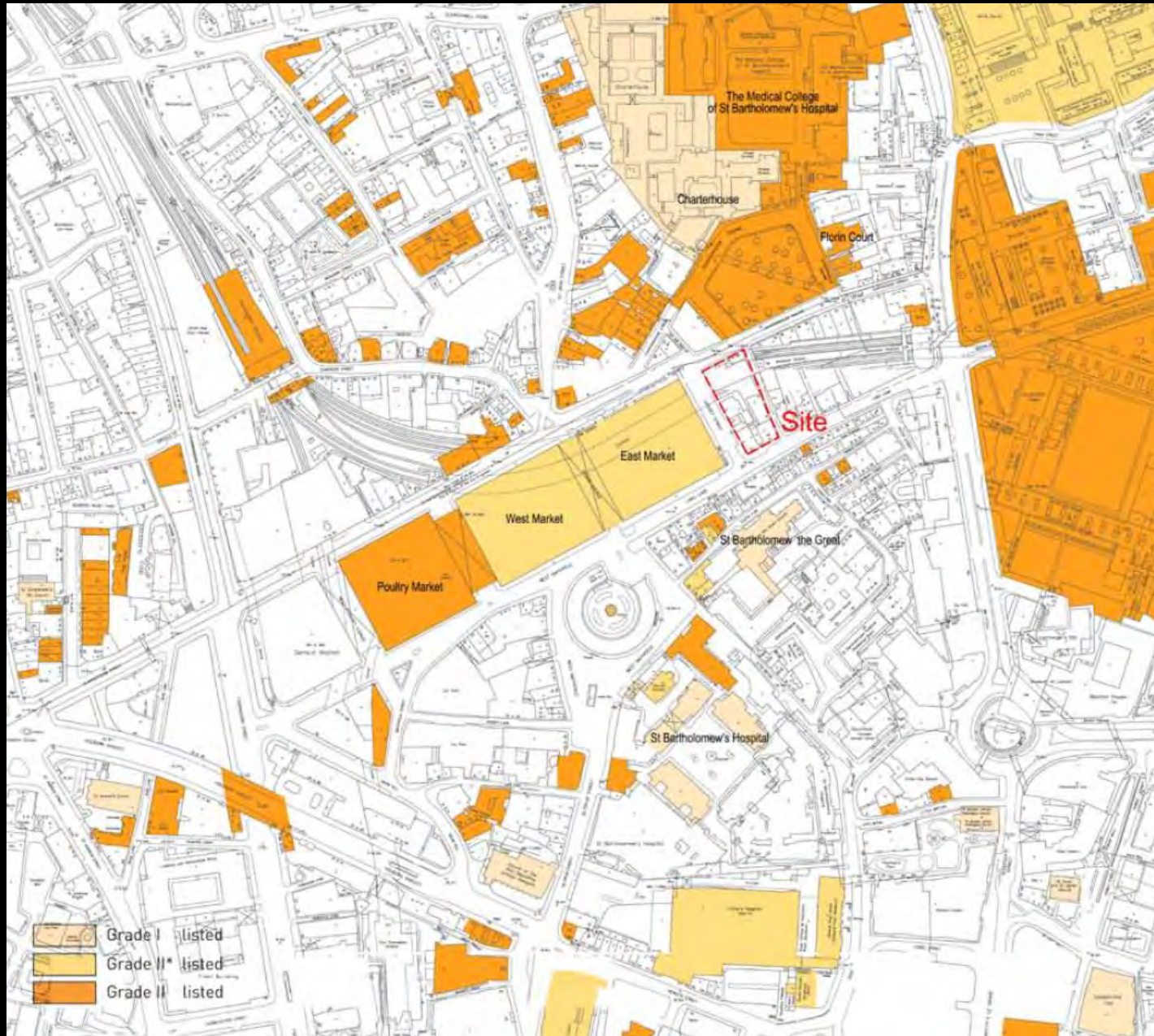
Proposed view across Broadgate Circle looking south

100 Liverpool Street and 8-12 Broadgate



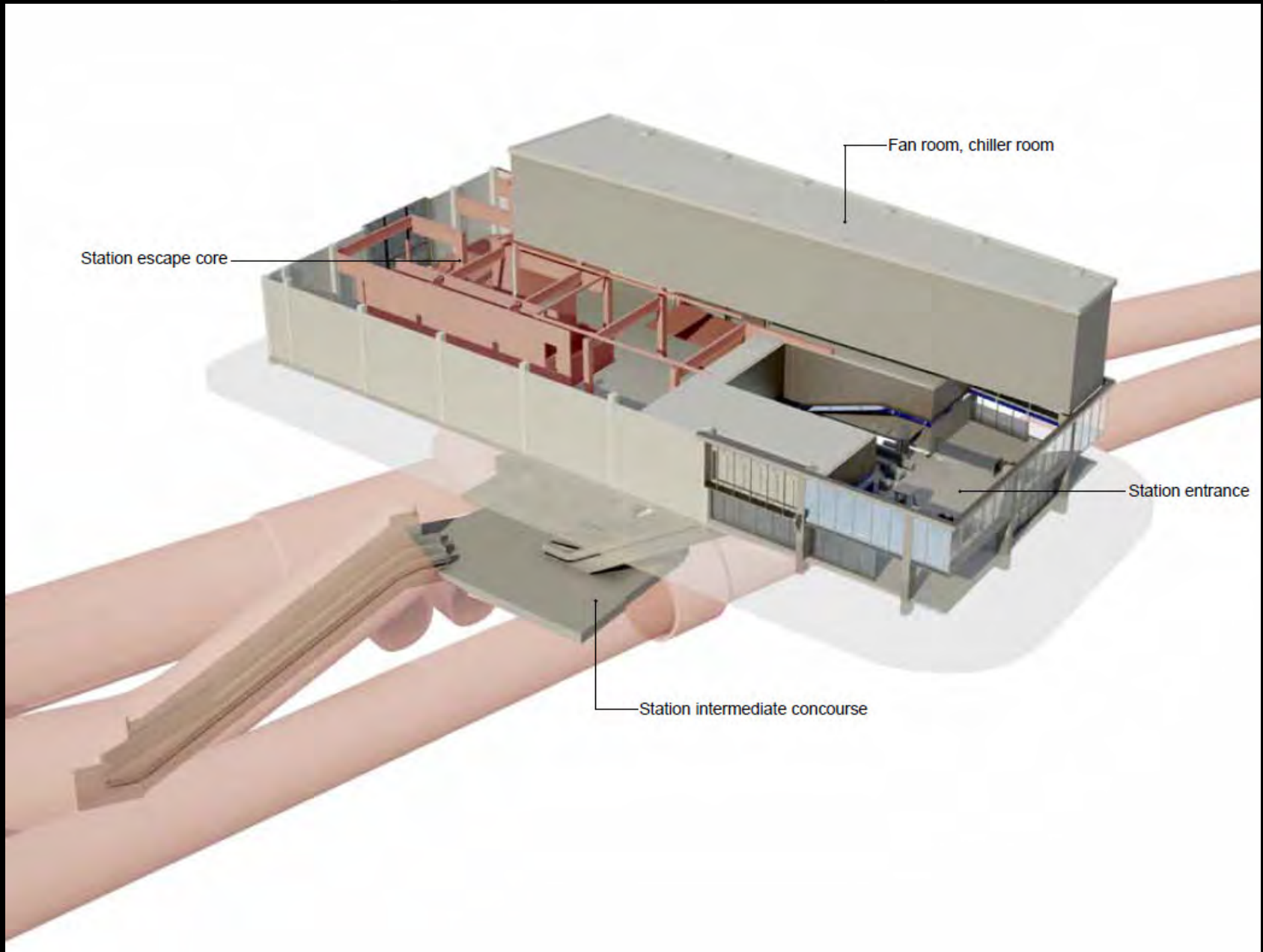
Proposed view looking northeast at junction of Blomfield Street and Liverpool Street

Farringdon East Crossrail Oversight Development



Site location plan

Farringdon East Crossrail Oversight Development



Proposed Farringdon East ticket hall

Farringdon East Crossrail Oversite Development



Long Lane, at the corner of Rising Sun Court, looking north-east

Farringdon East Crossrail Oversight Development



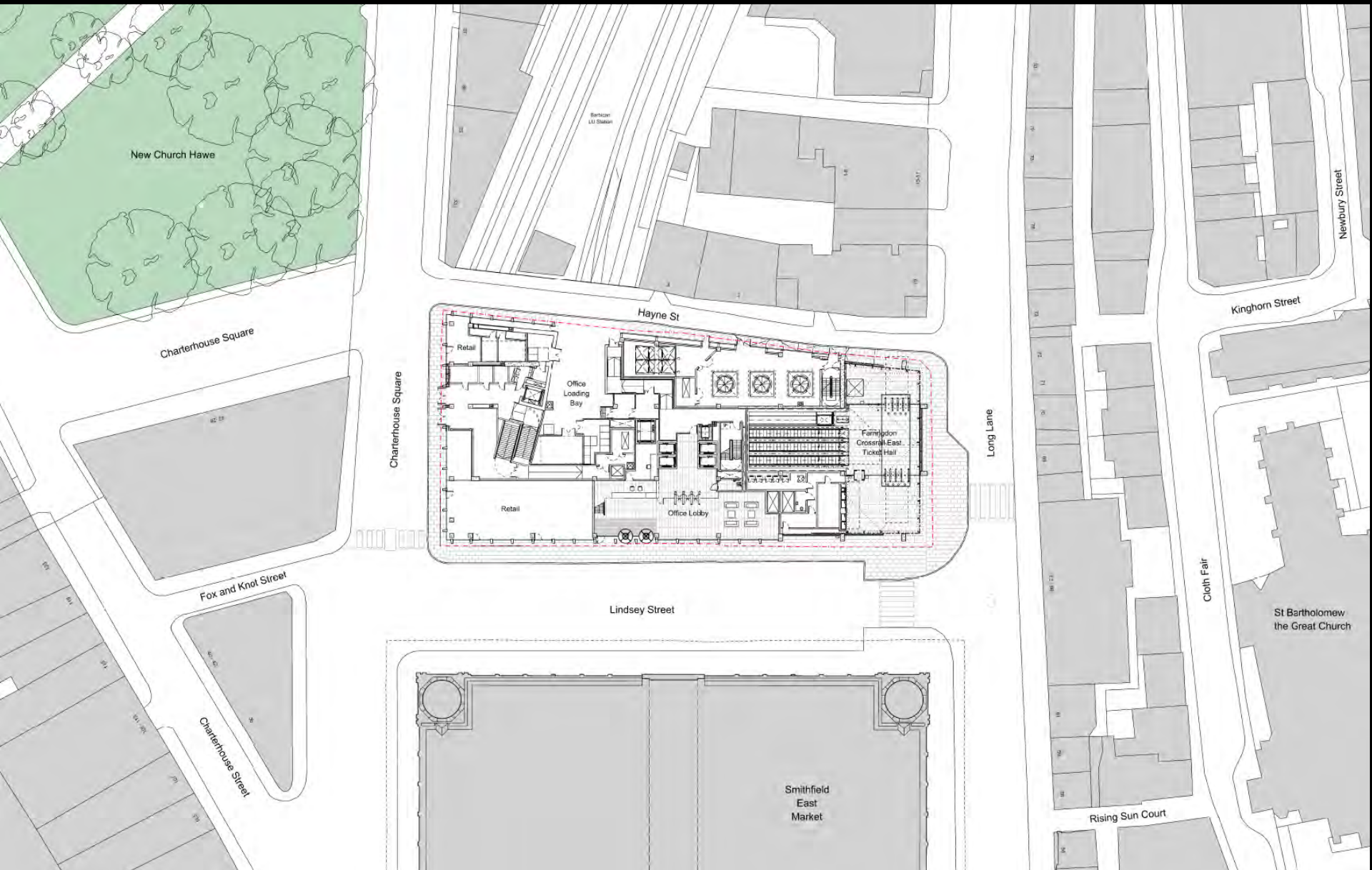
Long Lane, looking north along Hayne Street

Farringdon East Crossrail Oversight Development



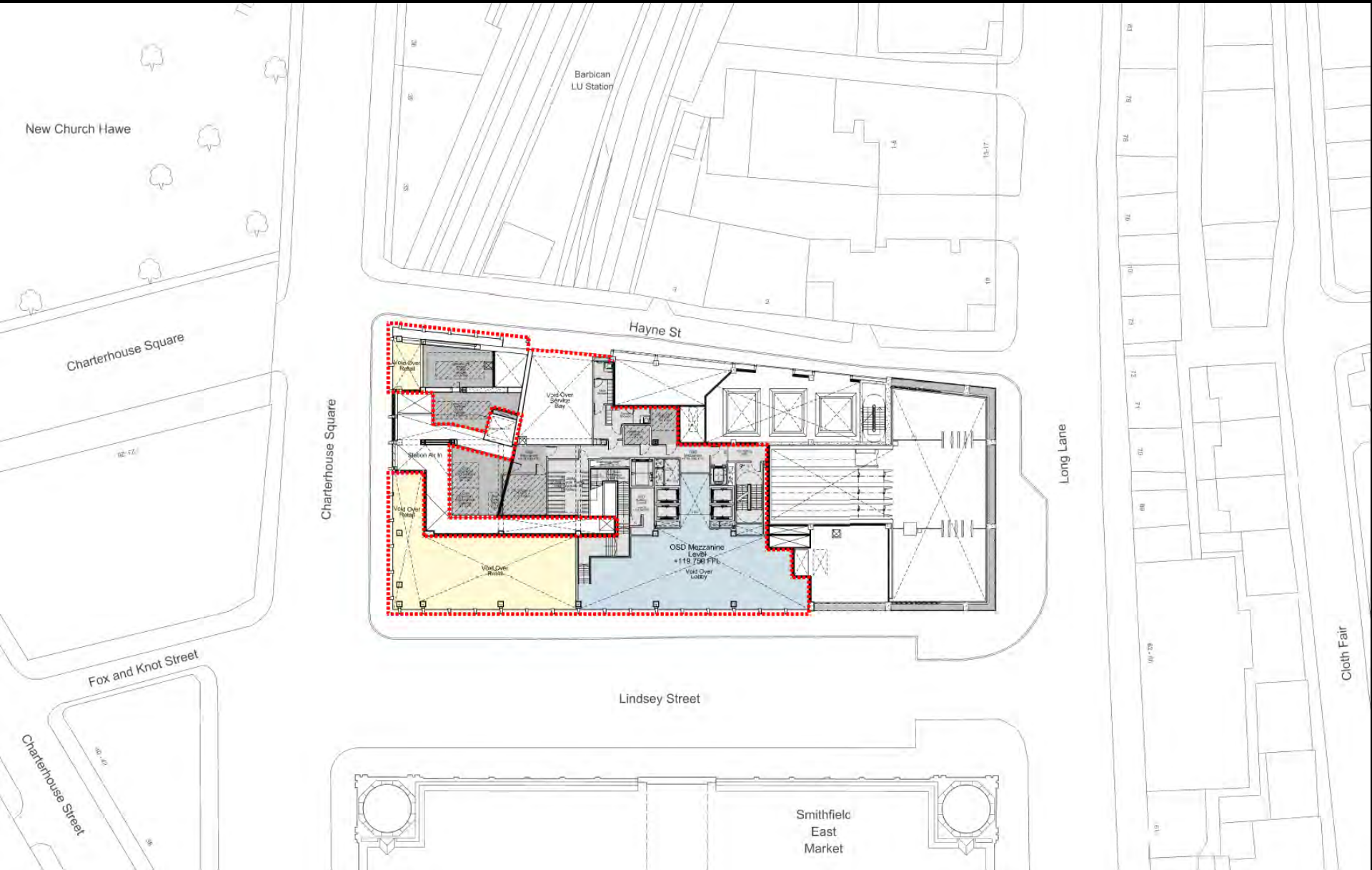
Lindsey Street, looking south-east

Farringdon East Crossrail Oversight Development



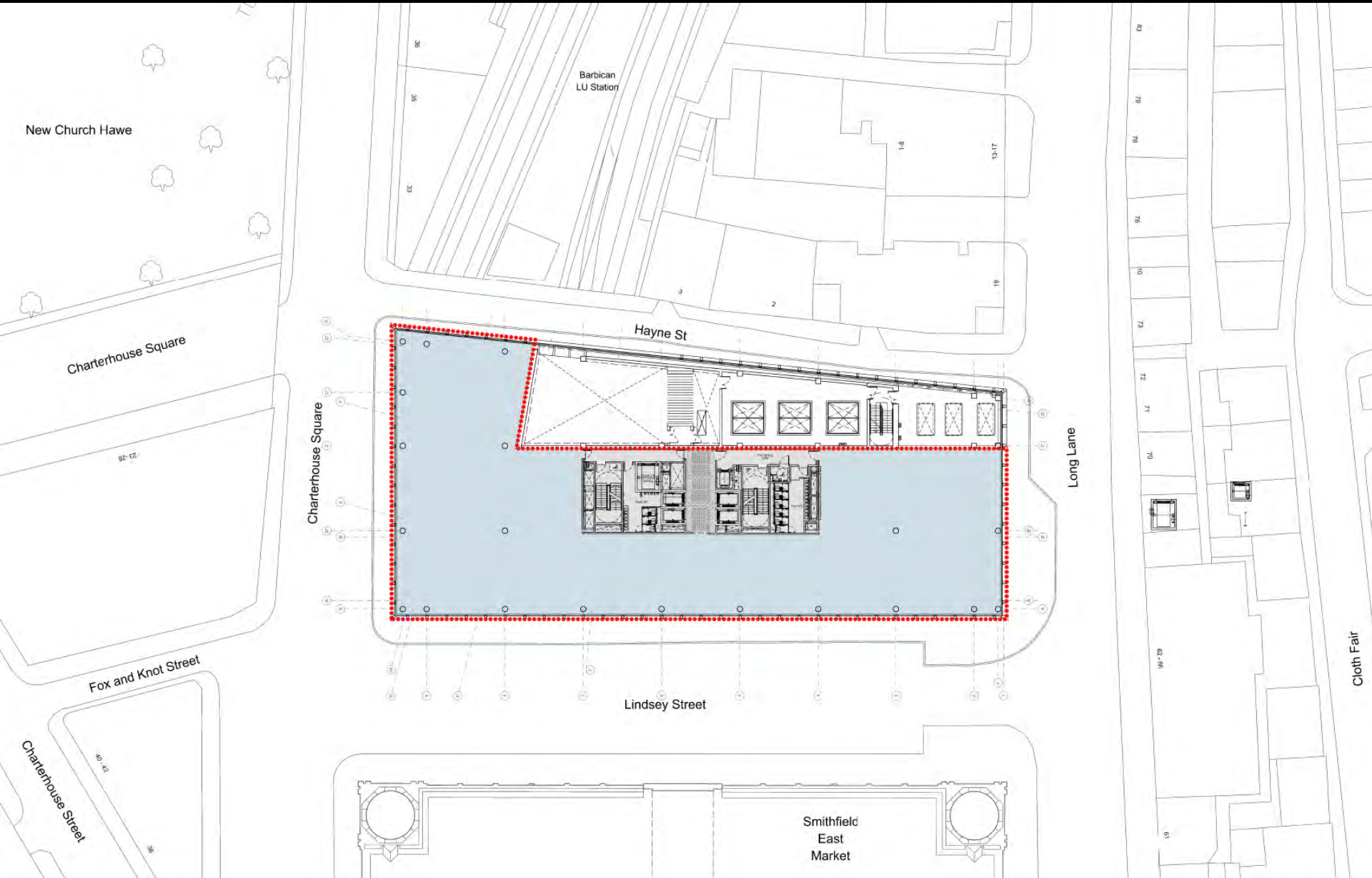
Proposed context plan

Farringdon East Crossrail Oversight Development



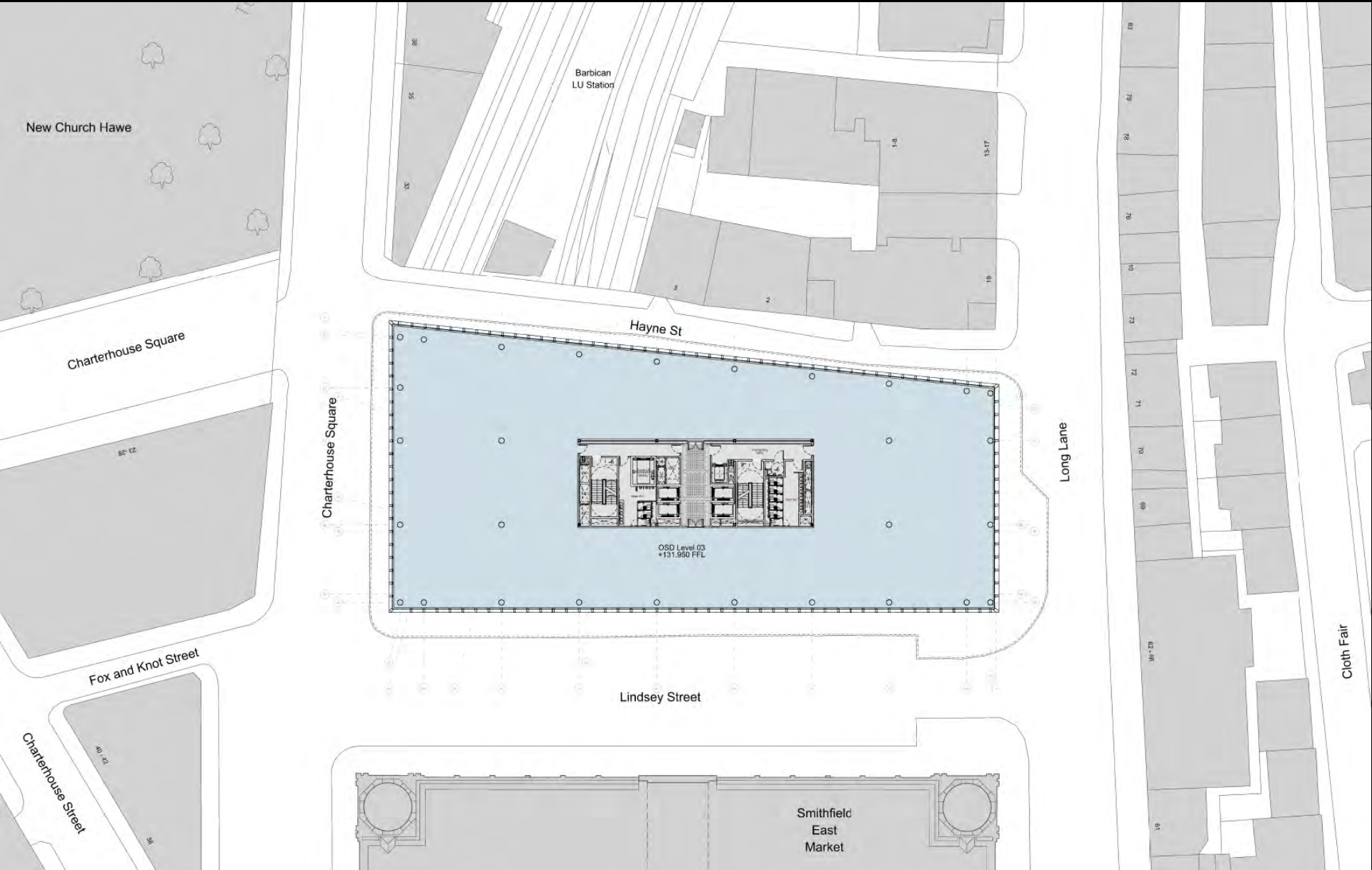
Mezzanine level plan

Farringdon East Crossrail Oversight Development



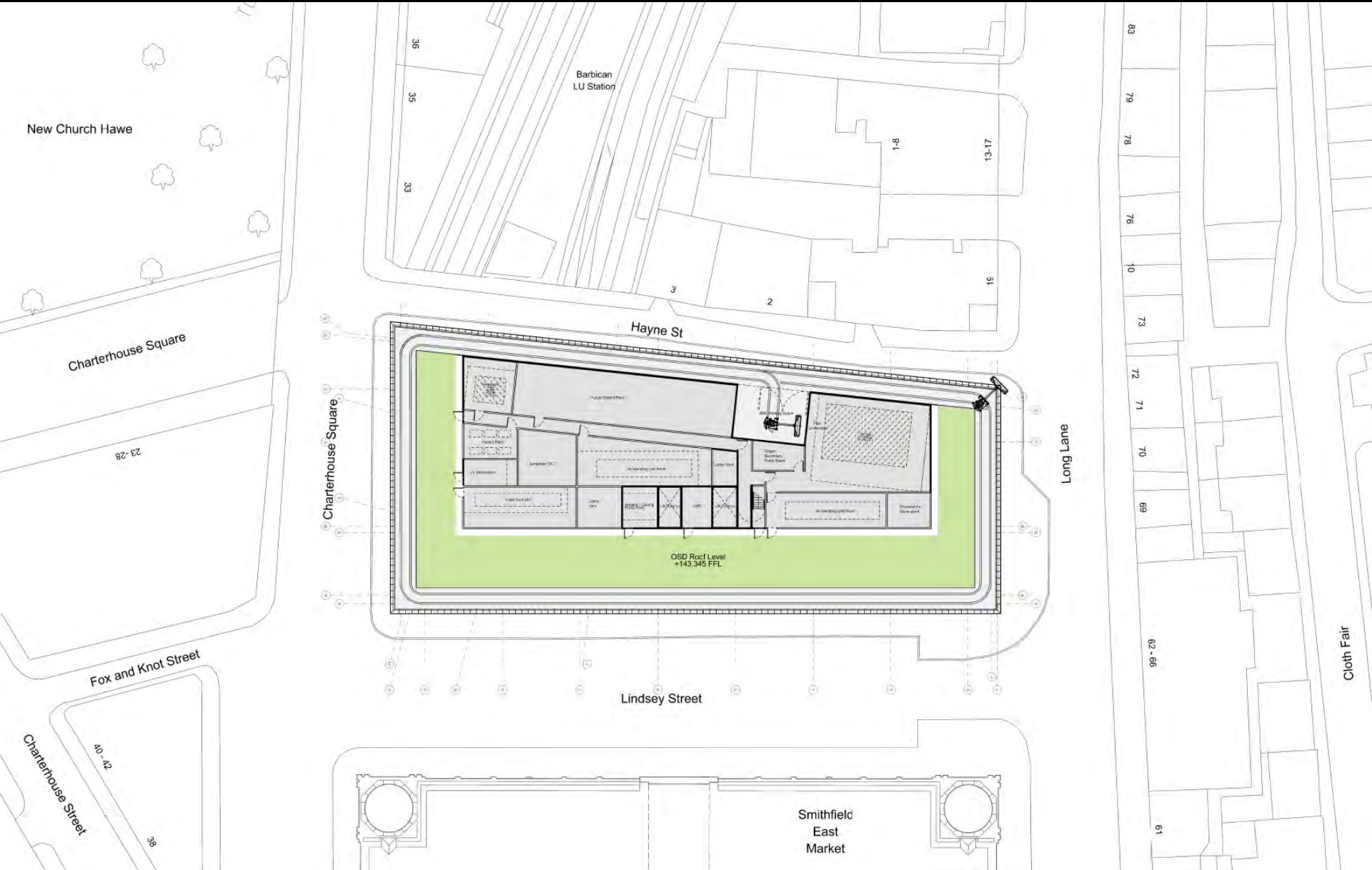
Level 01 plan

Farringdon East Crossrail Oversight Development



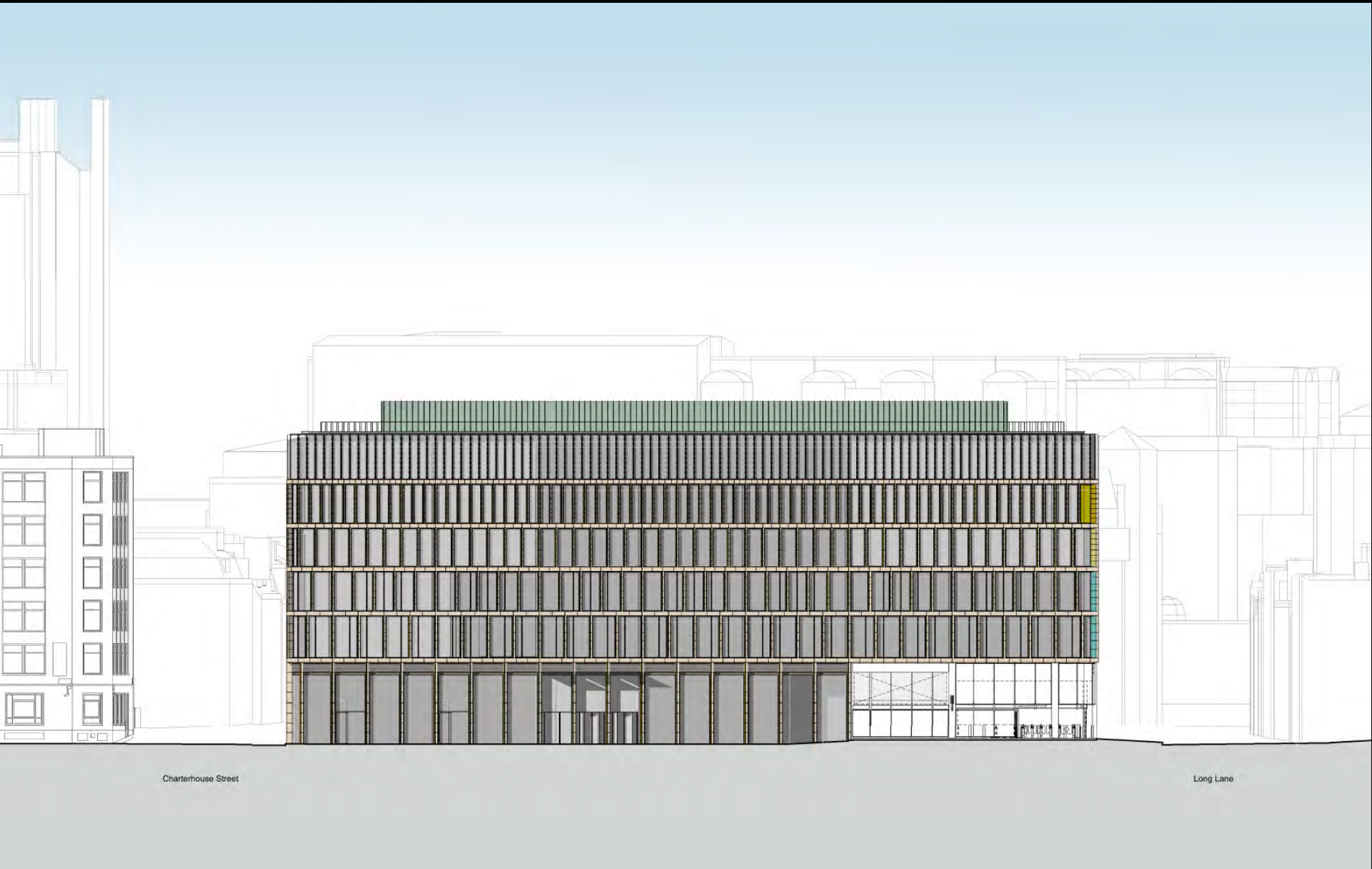
Level 03 plan

Farringdon East Crossrail Oversight Development



Roof level plan

Farringdon East Crossrail Oversight Development

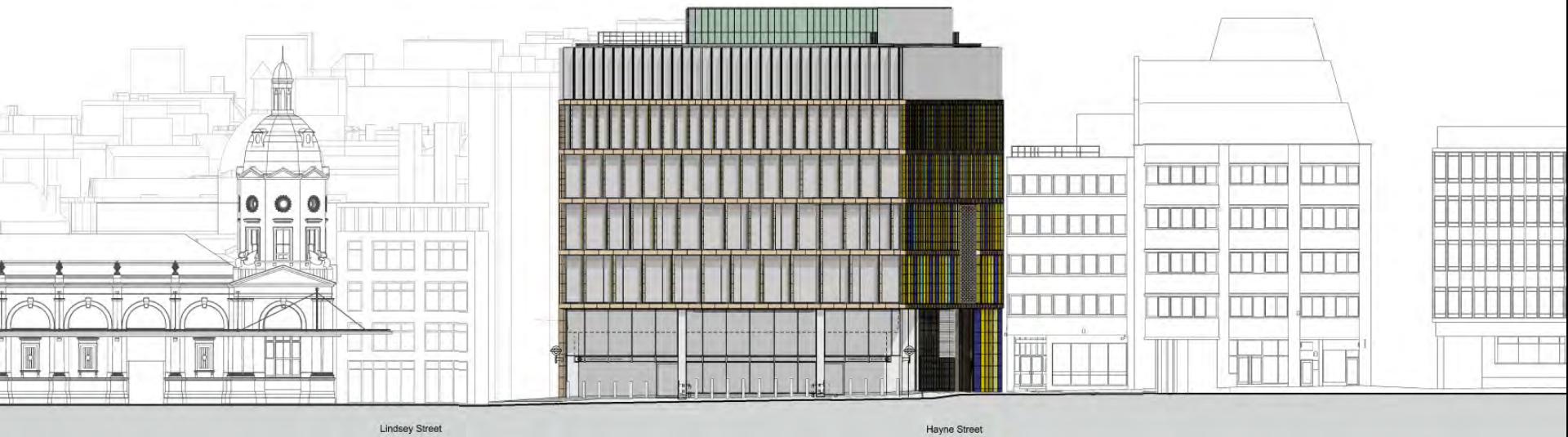


Charterhouse Street

Long Lane

Proposed west elevation

Farringdon East Crossrail Oversight Development



Lindsey Street

Hayne Street

Proposed south elevation

Farringdon East Crossrail Oversight Development

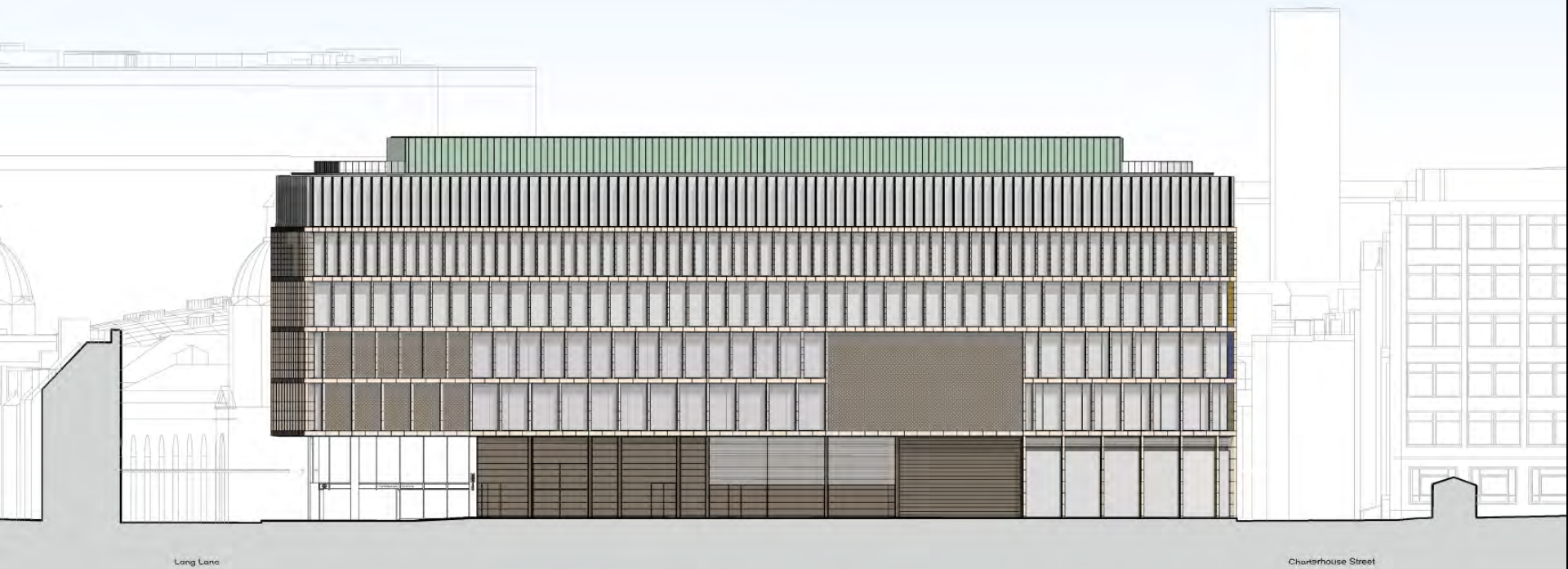


Hayne Street

Lindsey Street

Proposed north elevation

Farringdon East Crossrail Oversight Development



Proposed east elevation

Farringdon East Crossrail Oversite Development



North-east corner of Charterhouse Square: Proposed view looking south-west

Farringdon East Crossrail Oversight Development



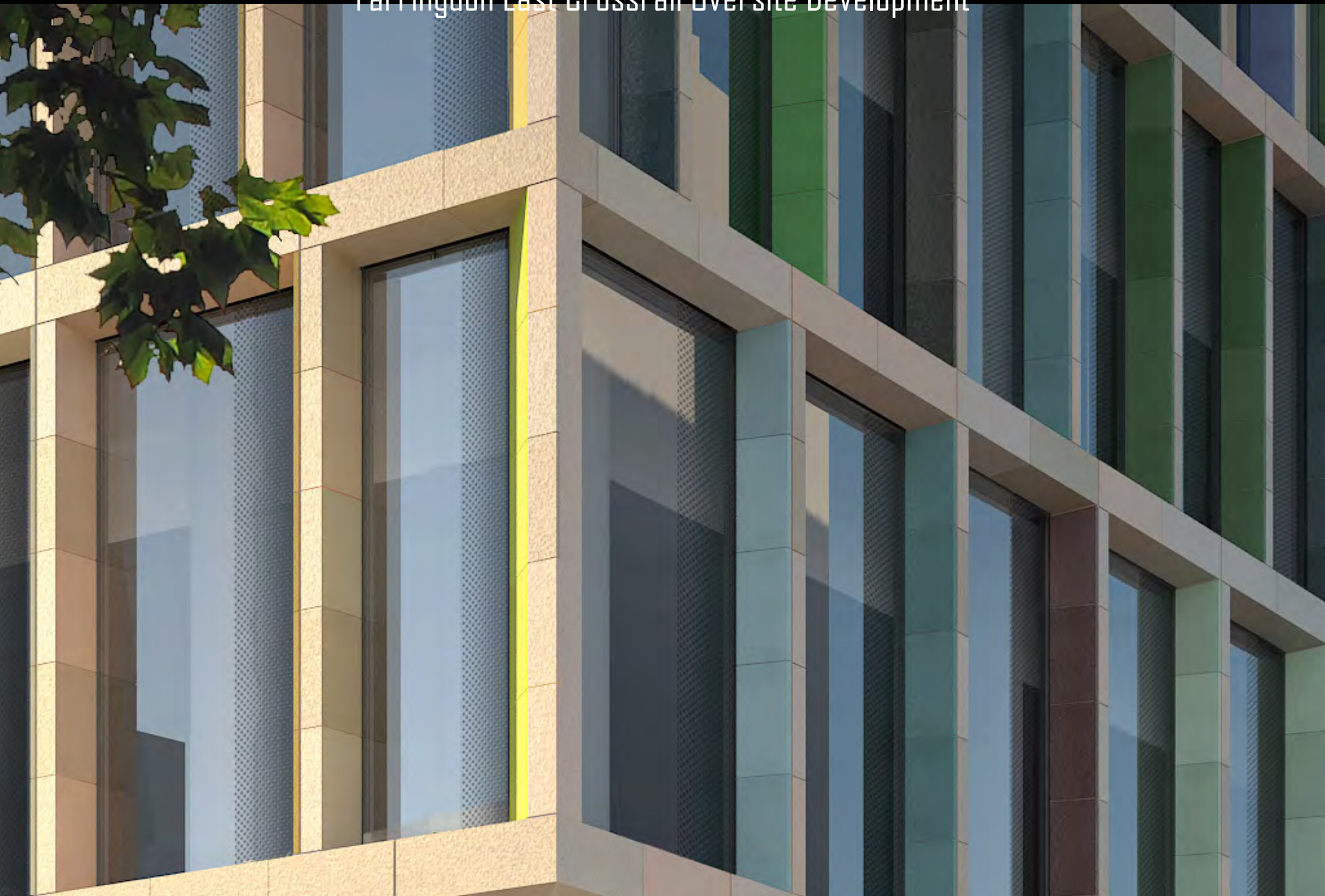
East Gate of Charterhouse Square: Proposed view looking south-west

Farringdon East Crossrail Oversight Development



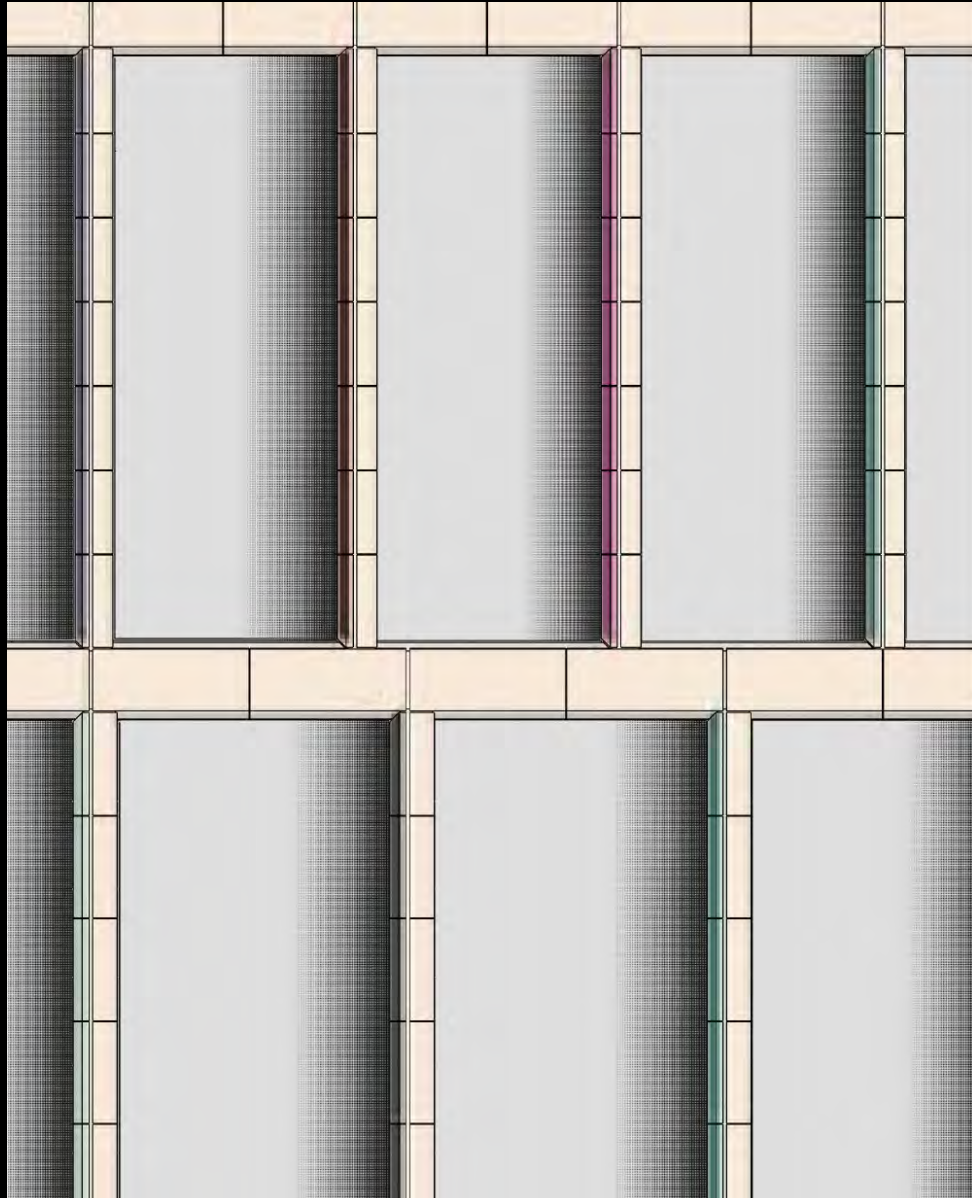
South west gate of Charterhouse Square: Proposed view looking south-west

Farringdon East Crossrail Oversight Development



Fritting detail

Farringdon East Crossrail Oversight Development



Fritting detail – smaller dots

Farringdon East Crossrail Oversight Development



Charterhouse Street: Proposed view looking east

Farringdon East Crossrail Oversight Development



West Smithfield Rotunda Garden: Proposed view looking north-east

Farringdon East Crossrail Oversight Development



Long Lane, at the corner of Rising Sun Court: Proposed view looking north-east

Farringdon East Crossrail Oversight Development



Long Lane: Proposed view looking north along Hayne Street

Farringdon East Crossrail Oversight Development



Long Lane beside no.80-83: Proposed view looking west

Farringdon East Crossrail Oversight Development



Lindsey Street: Proposed view looking east

CHEAPSIDE AND GUILDHALL AREA ENHANCEMENT STRATEGY



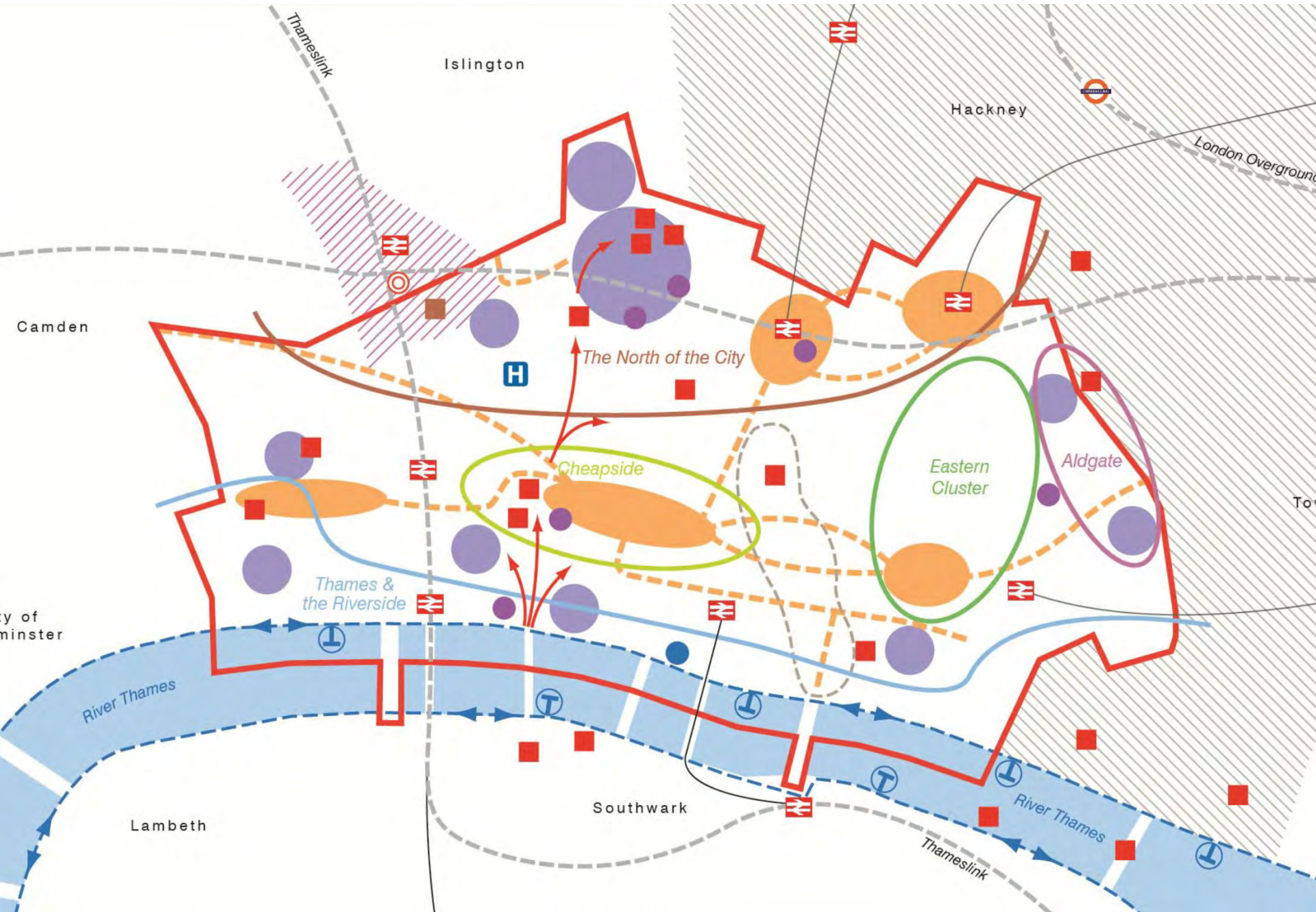
**Planning and
Transportation Committee**

12th May

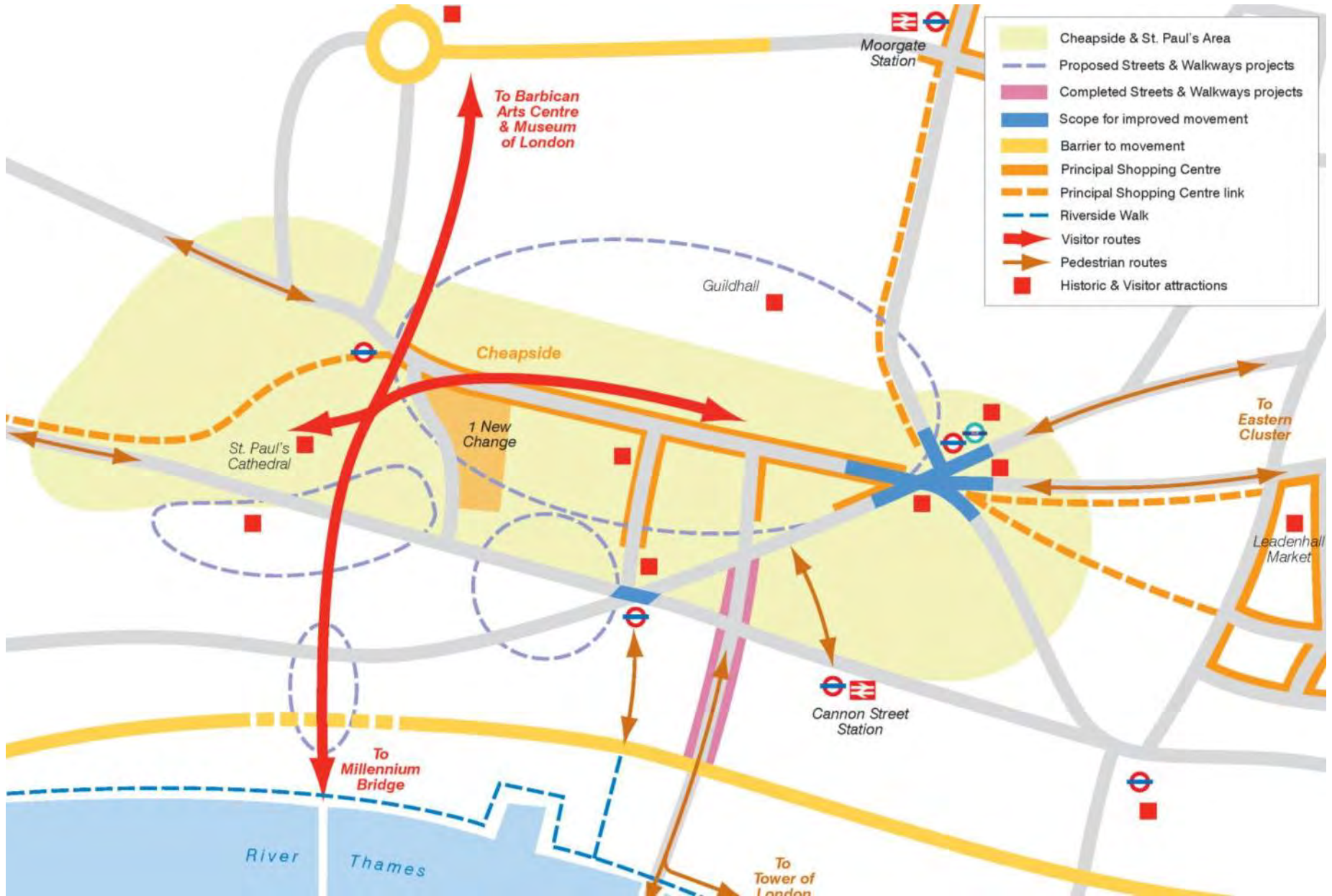


**CHEAPSIDE
GUILDHALL**

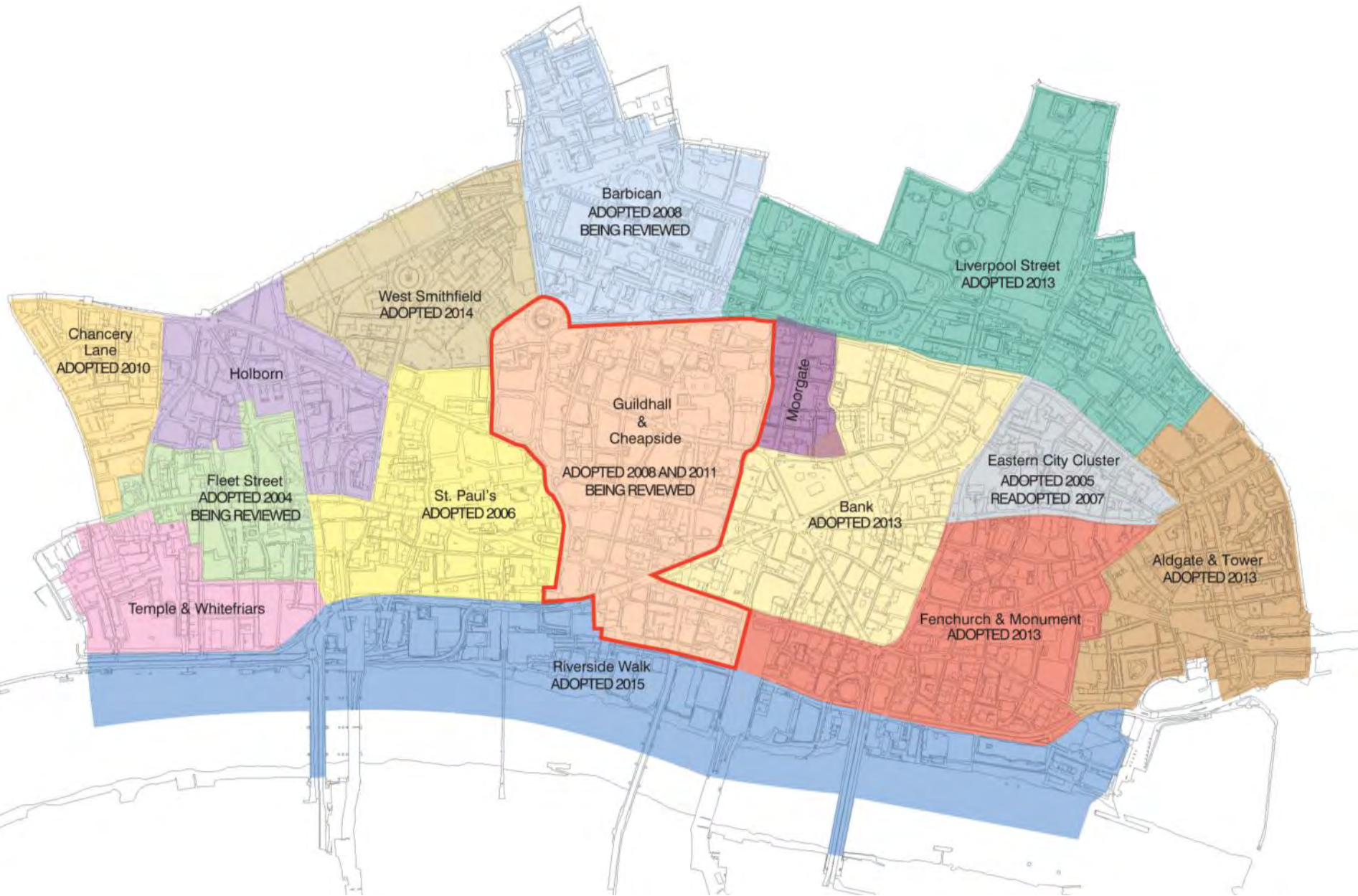
STRATEGY OVERVIEW - Core Strategy



STRATEGY OVERVIEW - Core Strategy



STRATEGY REVIEW



PUBLIC CONSULTATION



PUBLIC CONSULTATION

Targeted correspondence:

- 2,800 leaflets (to all local occupiers and stakeholders)
- 1,670 emails with link to online survey (disseminated through City networks)
- 2,365 visits on consultation website

Consultation responses:

- 226 online surveys
 - 201 on-site questionnaires
 - 46 exhibition feedback
 - 26 emails
 - 10 leaflets
 - 10 letters
- **514 responses**



PUBLIC CONSULTATION – Analysis

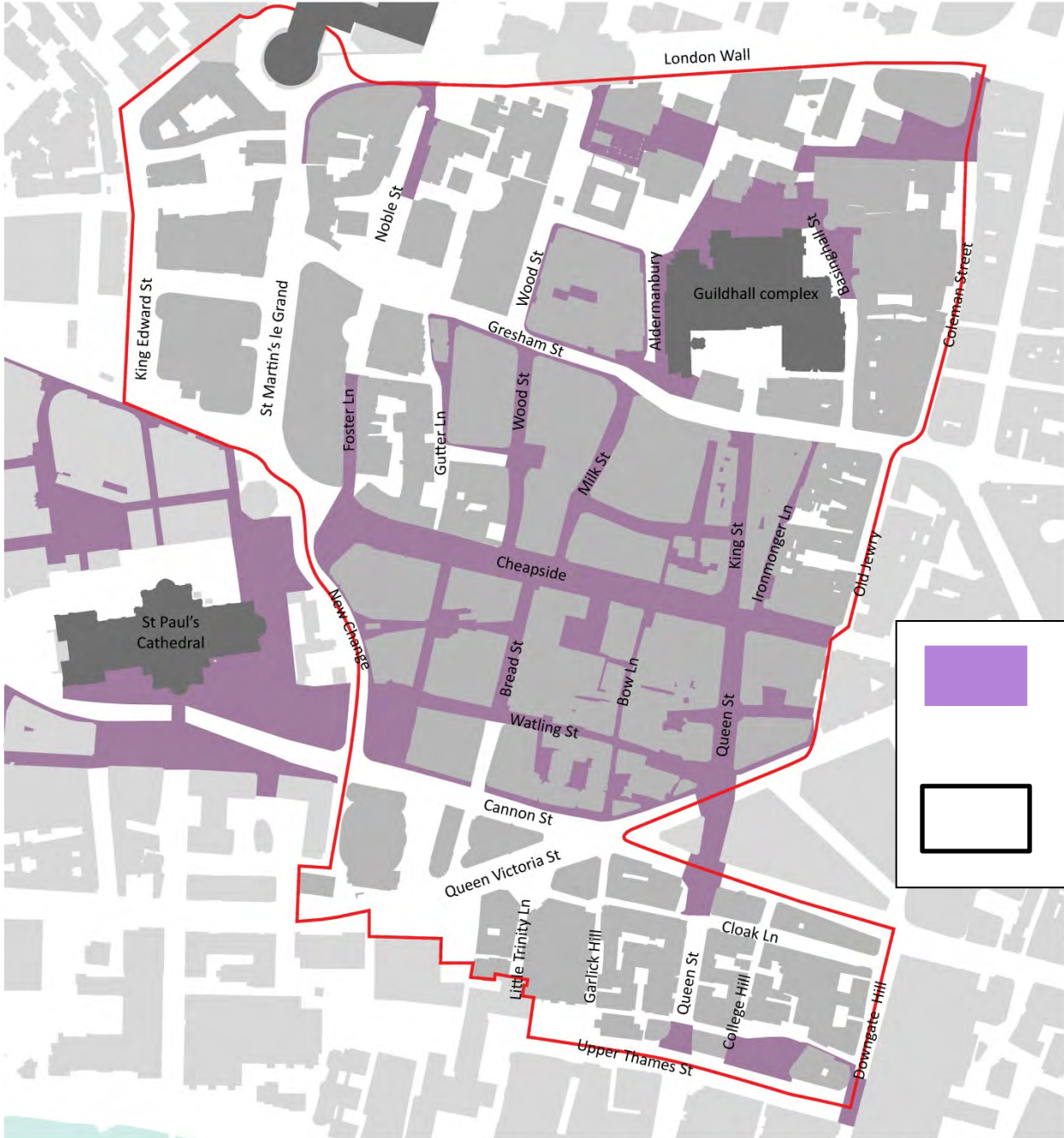
Main themes for improvements raised during the consultation:



- Traffic reduction and calming
- Air quality
- More greenery – trees and planting
- Enhanced cycle safety and facilities
- More space for pedestrians and cyclists
- Improved links between transport, retail, employment, leisure and visitor attractions clusters
- Better way-finding and enhanced information signage on heritage assets

STRATEGY OBJECTIVES

- **To better connect people with transport nodes, retail centre and cultural attractions**
- **To improve accessibility and way-finding to create easy-to-navigate and pleasant walking routes**
- **To introduce more greenery and create more public space for pedestrians to enjoy, away from traffic and pollution**
- **To improve road safety, particularly for vulnerable road users.**

COMPLETED PROJECTS AND FUTURE PUBLIC REALM OPPORTUNITIES



	Enhanced Public Realm
	Future Public Realm Opportunities

itsu

health & happiness



The
Square

Vital

MANSON HOUSE STATION





itsu

health & happiness

VISA

MURPHY HOUSE SHOES







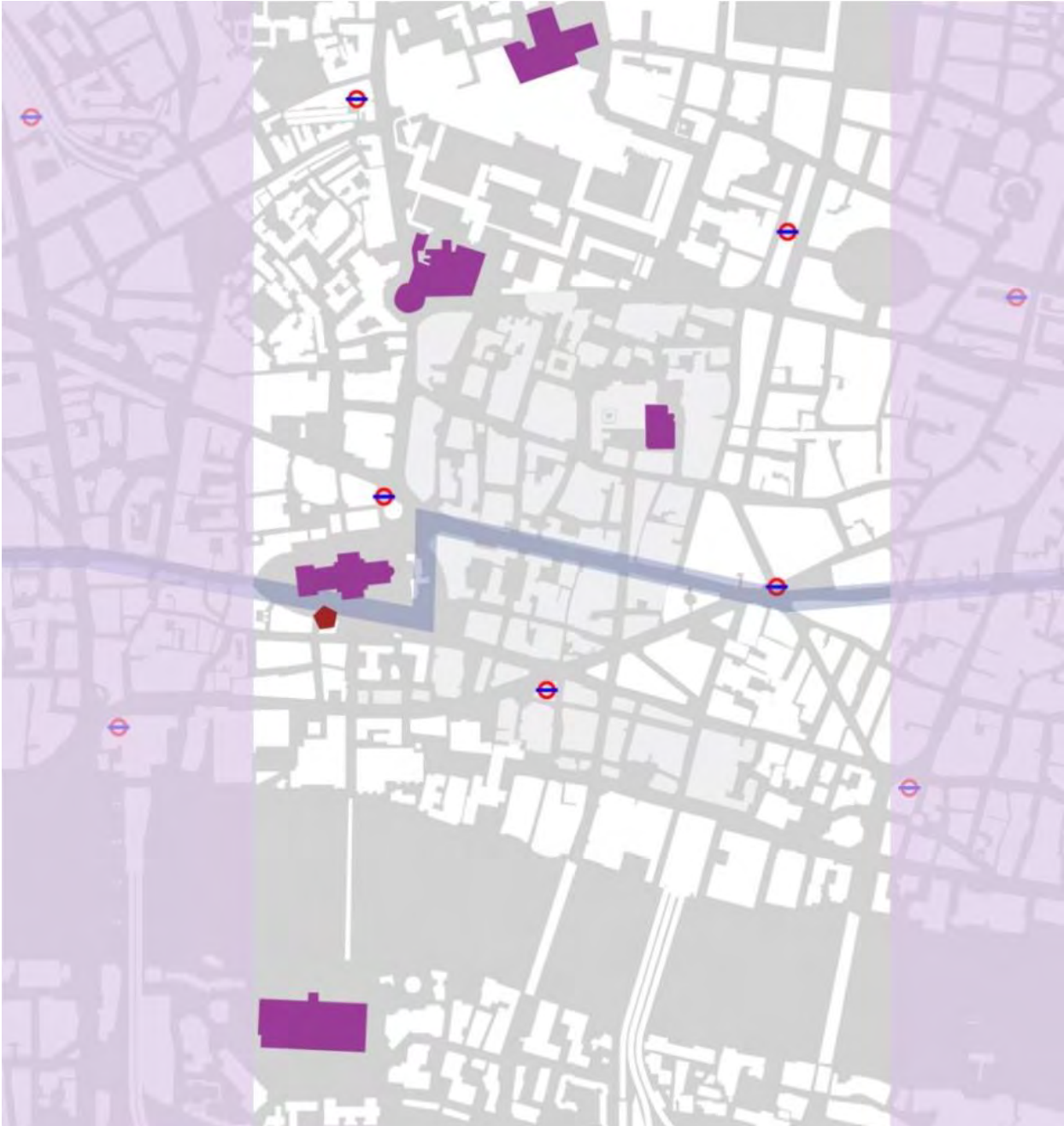
Real Estate
Selling
Rentals
Property Management
Call: 020 7123 4567

NOBLE STREET, SE

NOBLE STREET, SE



CULTURAL CONNECTIONS





St. Paul's
Street End
Barbican

020 8848 7711
020 8848 7711

STREET

STREET







FUTURE PUBLIC REALM - St Paul's/Museum of London Gyratory

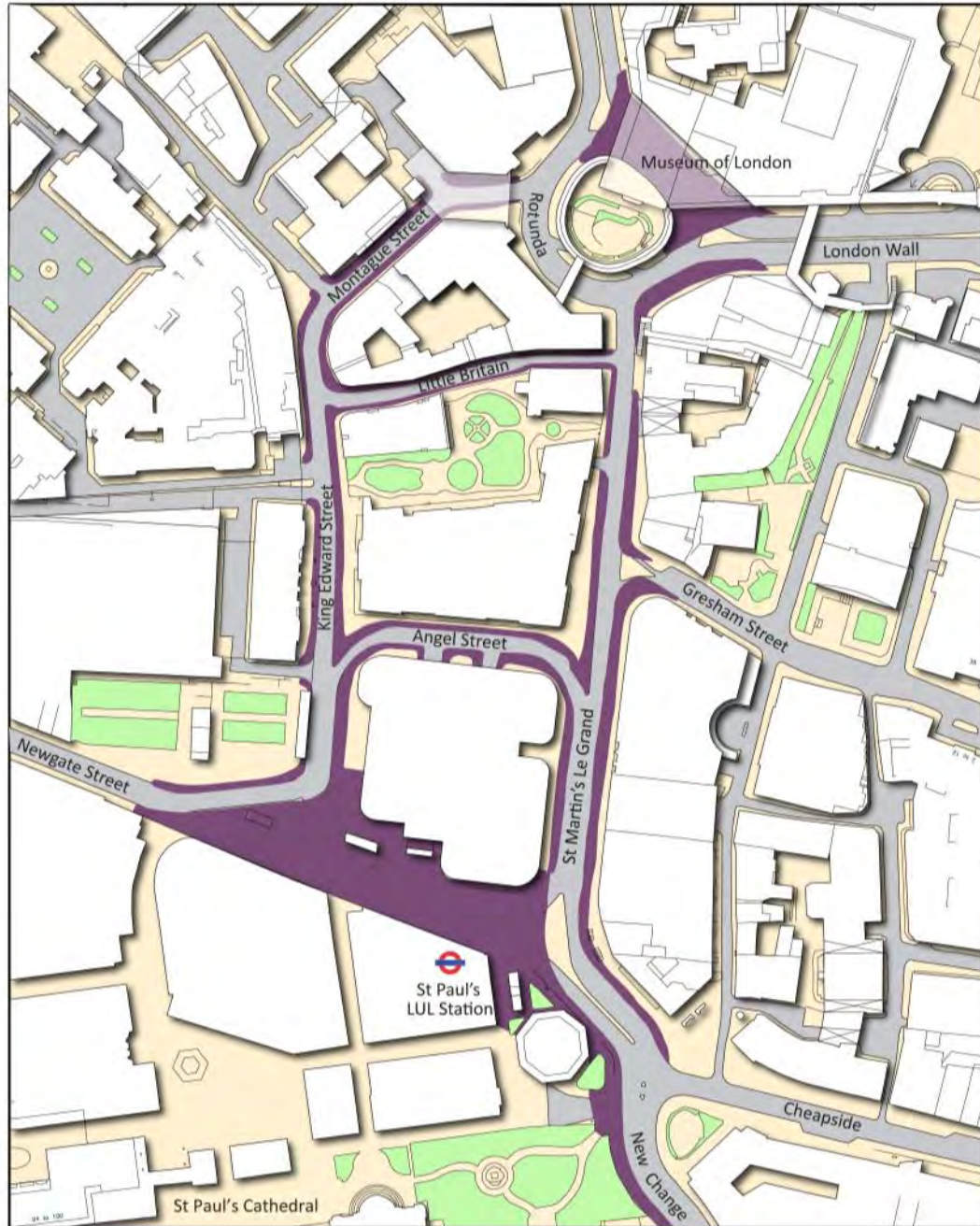




New Public Space King Edward Street



FUTURE PUBLIC REALM - St Paul's/Museum of London Gyratory





New Public Space Newgate Street



Planning & Transportation Next Committee

2nd June 2015